

**1<sup>ST</sup> SEM. 2009/2010**



**PAGE 1 OF 5**

**UNIVERSITY OF SWAZILAND**

**FINAL EXAMINATION PAPER**

**PROGRAMME : BACHELOR OF SCIENCE IN  
TEXTILE APPAREL DESIGN and  
MANAGEMENT TADM YEAR IV**

**COURSE CODE : TADM 401**

**TITLE OF PAPER : ADVANCE DRAPING**

**TIME ALLOWED : TWO (2) HOURS**

**INSTRUCTIONS : ANSWER QUESTION ONE (1)  
AND ANY OTHER (2)  
QUESTIONS**

**DO NOT OPEN THIS PAPER UNTIL PERMISSION HAS BEEN  
GRANTED BY THE CHIEF INVIGILATOR**

**QUESTION 1**

- A. i). With reference to a range/collection of coordinated ensembles project for draping, briefly describe the role inspiration plays in apparel design. Give seven examples of specific sources of inspiration you could use.

[14 marks]

- ii). Briefly discuss the theme of your range/collection for the draping project.

[4 marks]

- B. Each woman is unique and ideally her apparel should be designed to fit more than her physical proportions, with reference to apparel design discuss the following aspects as they relate to her;

- i). Life style
- ii). Age
- iii). Body type
- iv). The season.

[12 marks]

- C. i). Refer to the given designs and sketch a dress form to show the taped design guidelines that would assist you in draping the two designs.

[4 marks]

- ii). What styles are these designs? Illustrate the finished pattern piece, with all pattern markings for Design 1.



Design 1



Design 2

[6 marks]

[Total marks = 40]

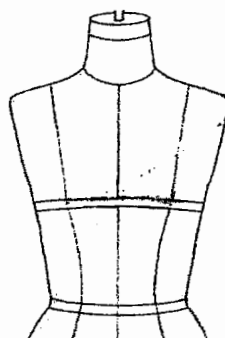
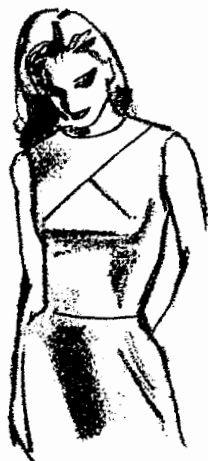
**QUESTION 2**

A. Tools and equipment are a requirement for any trade. Briefly explain the uses of each of the following equipment and tools in draping.

- i). Muslin
- ii). L-square
- iii). Vary form curve ruler
- iv). Tracing wheel
- v). Skirt marker
- vi). Ironing board

**[15 marks]**

B. i). Refer to the given design and show the taped design lines on the dress form that will enable you to drape the design.



**[4 marks]**

ii). Illustrate the draped pattern piece pinned on the dress form and with excess fabric cut away.

**[5 marks]**

iii). Draw the final pattern piece with all the pattern markings indicated.

**[6 marks]**

**[Total 30 marks]**

**QUESTION 3**

A. Facings, hems and waistbands are used to finish off edges of garments. With the aid of notes and diagrams show how you would use the draped garment pattern pieces to cut out the following;

- i). V-neckline facing
- ii). Armhole facing
- iii). Waistline facing

[15 marks]

- B. i). With illustrations show the finished neckline pattern pieces for a V-neckline front and standard back neckline.



[7 marks]

- ii). Briefly discuss and illustrate how you would prepare and attach the V-neckline facing.

[8 marks]

[Total marks 30]

#### QUESTION 4

- A. With brief notes and diagrams discuss the preparation and draping steps of a mandarin collar and illustrate the finished pattern with pattern markings.

[10 marks]



B. i). Refer to skirt Designs 1 and 2 and discuss the styling, highlight the differences.

[6 marks]

ii). Briefly discuss how you would prepare fabric and drape the Design 2 skirt.

[9 marks]

iii). Draw the pattern piece for Design 1 skirt yoke and indicate all pattern markings.

[5 marks]

[Total marks = 30]