

1ST SEM. 2009/2010



PAGE 1 OF 4

UNIVERSITY OF SWAZILAND

FINAL EXAMINATION PAPER

**PROGRAMME : BACHELOR OF SCIENCE IN HOME
TEXTILE, APPAREL AND DESIGN
MANAGEMENT YEAR III**

COURSE CODE : TADM 301

TITLE OF PAPER : PATTERN TECHNOLOGY

TIME ALLOWED : Two (2) HOURS

**INSTRUCTIONS : ANSWER QUESTION ONE (1) AND ANY
OTHER TWO (2) QUESTIONS**

**DO NOT OPEN THIS PAPER UNTIL PERMISSION HAS BEEN
GRANTED BY THE CHIEF INVIGILATOR**

Question 1

Using the set of blouse pattern pieces of size 34 provided to you, do the following:

- a) Create a new storage area EXAM. (2 Marks)
- b) Create a notch table. (3 Marks)
- c) Create a grade rule table, for size 30, 32, 34, 36, 38& 40 (10 Marks)
- d) Digitize front, back and sleeve block (9+9+7=25 Marks)

[2+3+10+25=40 marks]

Question 2

- a) Open the shirt front from the exam folder and do the following:
 - i) Place the front into the work area – notice the armhole is not smooth.
 - ii) Modify the armhole points to smoothen it.
 - iii) Drop front and back armhole by 1.5 cm and add 1cm to the chest.
 - iv) Modify the sleeve accordingly to fit the new armhole.
 - v) Measure the notch position on the front and back piece and modify notch position to fit.
 - vi) Save as **Answer 2a in your folder.**
- b) From the exam folder open the ladies front and do the following:
 - i) Draw a new neck line.
 - ii) Add 1.5 cm to the centre front.
 - iii) Create a grow on facing.
 - iv) Save as **Answer 2b in your folder.**

(5 x 3 =15 Marks)

(3 x 5 = 15 Marks)
[15+15=30Marks]

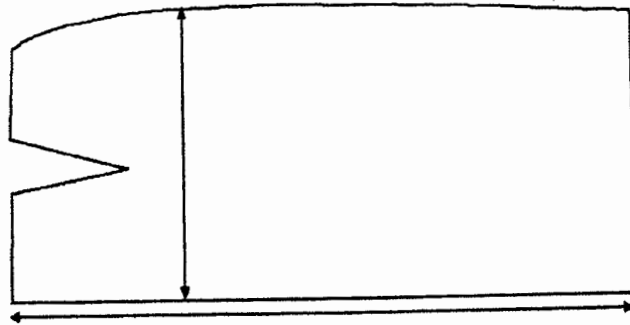
Question 3

- a) From the exam folder open pants-front and pants-back:
 - i) Rotate the pieces 90° for stretch fabric
 - ii) Create left and right for the back as the back needs pocket marking.
 - iii) Create drill holes on the back for the pocket.
 - iv) Create a pocket.
 - v) Create a waist band 92cmx9.5 cm.
 - vi) Save as **Answer 3a in your folder**

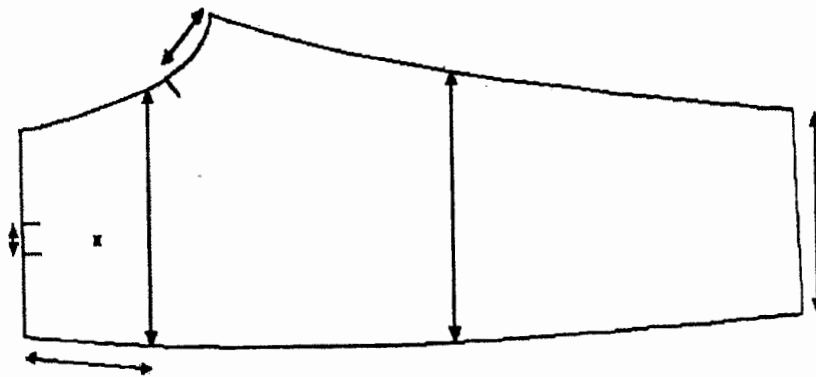
(15 Marks)

b) From the exam folder open the skirt-front, shirt front and pants-front. Measure indicated lines. Write the answer in the answer sheet.

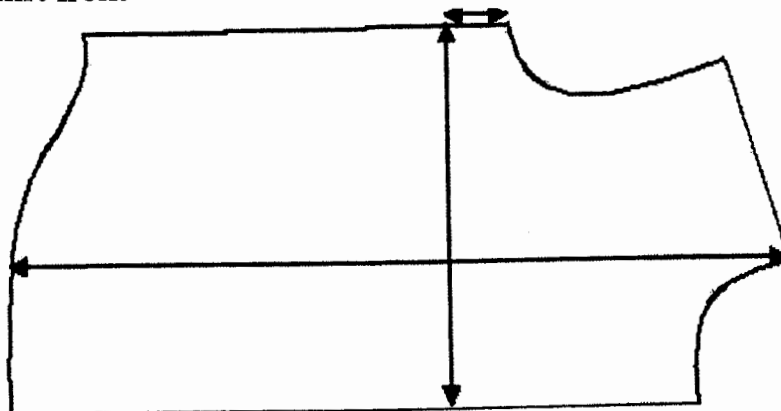
i. Skirt Front



ii) Pants-front



iii) Shirt front



(10 x 1.5 = 15 Marks)

[15+15=30 Marks]

COURSE CODE TADM 301

Question 4

Open the ladies front from the exam folder:

- i) Create a 'V' yoke and make the ladies front in two pieces. Create two knife pleats 2 cm each facing the centre front in the ladies front piece 2.

Save as Answer 4i in your folder

(20 Marks)

- ii) Increase the length of ladies front by 5 cm. Increase flare by 5cm to give 'A' line shape to the garment. **Save as Answer 4ii in your folder**

(10 Marks)

[20+10=30 Marks]