



2nd SEM. 2009/2010

PAGE 1 OF 3

UNIVERSITY OF SWAZILAND

FINAL EXAMINATION PAPER

**PROGRAMME : BACHELOR OF SCIENCE IN
CONSUMER SCIENCE, CONSUMER
SCIENCE EDUCATION AND
TEXTILE AND APPAREL DESIGN
MANAGEMENT YEAR II**

COURSE CODE : TADM 204

TITLE OF PAPER : APPAREL CONSTRUCTION

TIME ALLOWED : TWO (2) HOURS

**INSTRUCTIONS : ANSWER QUESTION ONE (1)
AND ANY OTHER (2) QUESTIONS**

**DO NOT OPEN THIS PAPER UNTIL PERMISSION HAS BEEN
GRANTED BY THE CHIEF INVIGILATOR**

QUESTION 1 [COMPULSORY]

- a) Classify and describe the body types for children and state two (2) body measurements crucial in determining each type. **4X8 = (32)**
- b) Why do ethnic groups bother to identify an ideal body type and what purpose does it serve? **6X2 = (12)**
- [Total Marks = 40]**

QUESTION 2

- a) Describe the five (5) body types for women and one (1) for men. **6X2 = (12)**
- b) State the purpose of an opening and describe eight (8) general points to bear in mind when constructing openings. **9X2 = (18)**
- [Total Marks [30]**

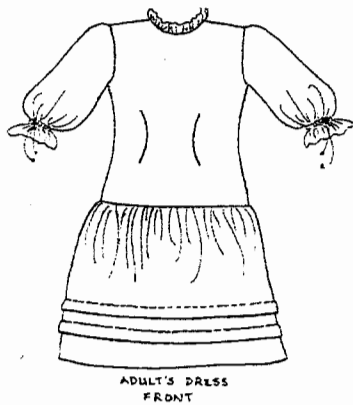
QUESTION 3

- a) Sleeves can be categorized into three (3) types. Describe each type and state two (2) examples for each type. **3X4 = (12)**
- b) State the five (5) general principles of garment assembly. **2X5 = (10)**
- c) Differentiate between a flat, mandarin and shirt collar. **3X1 = (3)**
- d) Why is the upper collar drafted to be slightly bigger than the under collar, and how would you treat the seams of a flat collar and shirt collar at the corners? **3X1 = (3)**

[Total Marks [30]

QUESTION 4

- a) Study the front view of the dress below, and list the methods of disposal of fullness used on the illustration. **2X5 = (10)**



- b) Discuss the five (5) factors that influence clothing selection in wardrobe planning?

5X4 = (20)

[Total Marks [30]