



1ST SEM. 2008/2009

PAGE 1 OF 3

UNIVERSITY OF SWAZILAND

FINAL EXAMINATION PAPER

**PROGRAMME : BACHELOR OF SCIENCE IN
TEXTILE AND APPAREL DESIGN
MANAGEMENT YEAR IV**

COURSE CODE : TADM 401

TITLE OF PAPER : ADVANCE DRAPING

TIME ALLOWED : TWO (2) HOURS

**INSTRUCTIONS : ANSWER QUESTION ONE (1)
AND ANY OTHER (2) QUESTIONS**

**DO NOT OPEN THIS PAPER UNTIL PERMISSION HAS BEEN
GRANTED BY THE CHIEF INVIGILATOR**

QUESTION 1 [COMPULSORY]

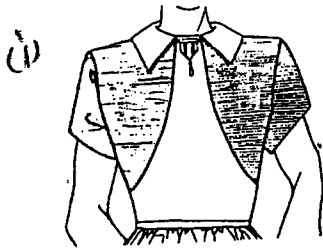
- a) Sketch the front and back views of one of the designs you made in the course.
With the aid of diagrams, explain the design and why the fabric was prepared in the manner it was, exclude the body form preparation of marking girth lines.
[30 marks]

- b) Explain the sewing order followed in assembling the garment parts of the above design.
[10 marks]

[Total marks = 40]

QUESTION 2

- (a) On the following draped designs, show with the use of the plaid fabric how the fabric grains (warp and weft) are positioned above and below the hip line and past the waist / shoulder dart from the centre front line.
[4X5 = 20 marks]



- (b) Differentiate the five body types on size charts for women.

[5X2 = 10 marks]

[Total marks = 30]

QUESTION 3

Discuss the history of figure typing that took place in the western world.

[Total marks = 30]

QUESTION 4

- a) The designing framework is pivotal in designing functional wear. It gives a systematic and scientific approach to design, and it demystifies the invisible and untraceable approach that was used before. Discuss the framework with reference to a windbreaker suitable for cold and wet weather.

[20 marks]

- b) What are the five (5) key body measurements used for carrying out a computer based figure analysis programme, and state five (5) main recommendations you got from the analysis.

[10 marks]

[Total marks = 30]