



UNIVERSITY OF SWAZILAND

SUPPLEMENTARY EXAMINATION PAPER

**PROGRAMME : BACHELOR OF SCIENCE IN HOME
TEXTILE, APPAREL AND DESIGN
MANAGEMENT YEAR III**

COURSE CODE : TADM 301

TITLE OF PAPER : PATTERN TECHNOLOGY

TIME ALLOWED : TWO (2) HOURS

**INSTRUCTIONS : ANSWER QUESTION ONE (1) AND ANY
OTHER TWO (2) QUESTIONS**

**DO NOT OPEN THIS PAPER UNTIL PERMISSION HAS BEEN
GRANTED BY THE CHIEF INVIGILATOR**

Question 1

- a) Analyze the design of figure 1 and develop the same using the basic bodice (front) provided to you on page 4.

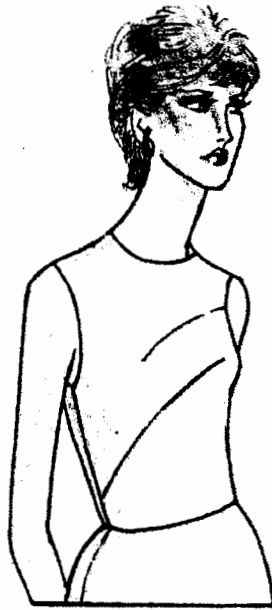


Figure 1

(20 Marks)

- b) Analyze the design of figure 1 and develop the same using the basic skirt (front) provided to you on page 4.

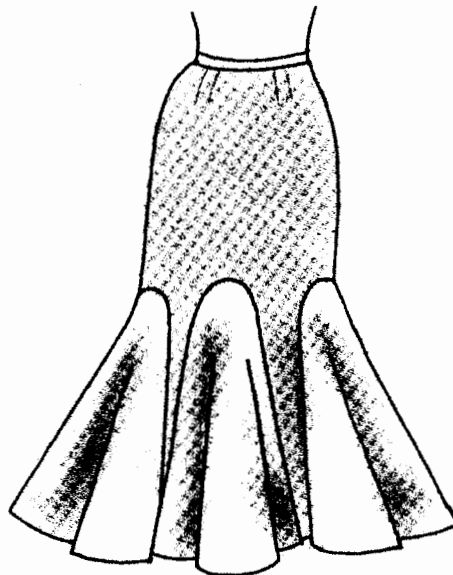


Figure 2

(20)

[20 + 20 = 40 Marks]

Question 2

Define or explain following:

- i. Patten drafting
- ii. Basic pattern set
- iii. Patten chart
- iv. Pattern plot
- v. Graduated and radiating darts.
- vi. Pin tucks and pleat tucks

(30 Marks)

Question 3

On ACCUMARK you can digitize half of the pattern piece and then mirror it. Give the steps how you will digitize and make the full piece.

(30 Marks)

Question 4

Explain the role of the following from ACCUMARK main menu. Please choose any five to Answer:

- i) Piece verify plot table
- ii) Digitizing
- iii) Annotation editor
- iv) Marker plot parameter table
- v) Blocking and buffering
- vi) Lay limit editor

(30 Marks)

