

**1<sup>ST</sup> SEM. 2007/2008**



**PAGE 1 OF 3**

**UNIVERSITY OF SWAZILAND**

**FINAL EXAMINATION PAPER**

**PROGRAMME : BACHELOR OF SCIENCE IN ~~HOME~~  
TEXTILE, APPAREL AND DESIGN  
MANAGEMENT YEAR III.**

**COURSE CODE : TADM 302**

**TITLE OF PAPER : DRAPING**

**TIME ALLOWED : TWO (3) HOURS**

**INSTRUCTIONS : ANSWER QUESTION ONE (1)  
AND ANY OTHER TWO (2) QUESTIONS**

**DO NOT OPEN THIS PAPER UNTIL PERMISSION HAS BEEN  
GRANTED BY THE CHIEF INVIGILATOR**

**QUESTION 1**

- a) What is Princess Line bodice?  
(5 Marks)
- b) Illustrate princess line bodice and any two variations to a princess style.  
(15 Marks)
- c) Drape one of the designs which you have illustrated (front and back), using the calico fabric.  
(20 Marks)
- [5 + 15 + 20 = 40 Marks]

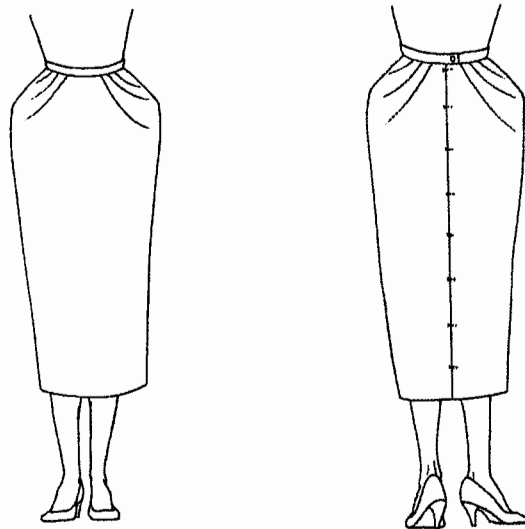
**QUESTION 2**

- a) Define or explain the following terms:
- i) Pattern drafting
  - ii) Pattern draping
  - iii) Test garment
  - iv) Cross grain
  - v) Truing
- (15 Marks)
- b) Briefly state the seam type, seam finish, needle size and thread type you would use for the following fabrics. Give two examples of fabrics available in the market for each category.
- i) Sheer fabric
  - ii) Light weight fabric
  - iii) Medium weight fabric
- (15 Marks)

[15 + 15 = 30 Marks]

**QUESTION 3**

Analyze the design given below and explain how you will drape the garment of the drape form.



(30 Marks)

**QUESTION 4**

Explain the preparation of fabric and draping technique for the peplum shown in the garment below.



(30 Marks)