

**1<sup>ST</sup> SEM. 2007/2008**



**PAGE 1 OF 4**

**UNIVERSITY OF SWAZILAND**

**FINAL EXAMINATION PAPER**

**PROGRAMME : BACHELOR OF SCIENCE IN HOME  
TEXTILE, APPAREL AND DESIGN  
MANAGEMENT YEAR III.**

**COURSE CODE : TADM 301**

**TITLE OF PAPER : PATTERN TECHNOLOGY**

**TIME ALLOWED : TWO (2) HOURS**

**INSTRUCTIONS : ANSWER QUESTION ONE (1) AND ANY  
OTHER TWO (2) QUESTIONS**

**DO NOT OPEN THIS PAPER UNTIL PERMISSION HAS BEEN  
GRANTED BY THE CHIEF INVIGILATOR**

**Question 1**

- a) Analyze the design of figure 1 and develop the same using the basic bodice (front) provided to you on page 4.

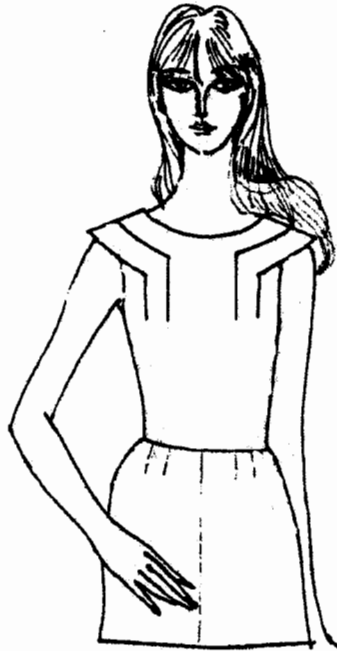


Figure 1

(30 Marks)

- b) The pattern Design for figure 2 & 3 have been developed and labelled A, B, C and D on page 3. Match the design with correct pattern shape.



Figure 2

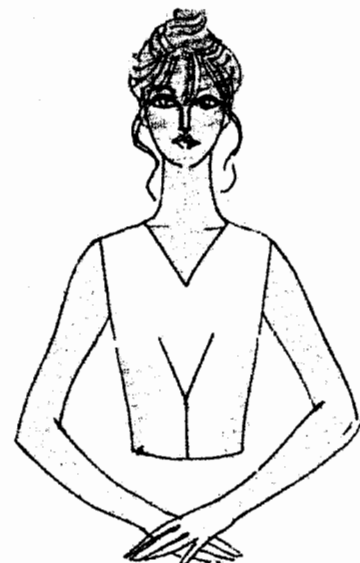


Figure 3

