

1st SEM. 2007/2008



PAGE 1 OF 8

UNIVERSITY OF SWAZILAND

SUPPLEMENTARY EXAMINATION PAPER

**PROGRAMME : BACHELOR OF SCIENCE IN TEXTILE AND
APPAREL DESIGN MANAGEMENT
HE, HEE, and TADM YEAR II**

COURSE CODE : TADM 203

TITLE OF PAPER : PATTERN DRAFTING

TIME ALLOWED : TWO (2) HOURS

**INSTRUCTIONS : ANSWER QUESTION ONE (1)
AND ANY OTHER (2) QUESTIONS**

**DO NOT OPEN THIS PAPER UNTIL PERMISSION HAS BEEN
GRANTED BY THE CHIEF INVIGILATOR**

1st SEM. 2007/2008



PAGE 1 OF 8

UNIVERSITY OF SWAZILAND

SUPPLEMENTARY EXAMINATION PAPER

**PROGRAMME : BACHELOR OF SCIENCE IN TEXTILE AND
APPAREL DESIGN MANAGEMENT
HE, HEE, and TADM YEAR II**

COURSE CODE : TADM 203

TITLE OF PAPER : PATTERN DRAFTING

TIME ALLOWED : TWO (2) HOURS

**INSTRUCTIONS : ANSWER QUESTION ONE (1)
AND ANY OTHER (2) QUESTIONS**

**DO NOT OPEN THIS PAPER UNTIL PERMISSION HAS BEEN
GRANTED BY THE CHIEF INVIGILATOR**

7. A bishop sleeve is
 - (a) A sleeve that has fullness gathered or pleated to a band or cuff
 - (b) Is cut in one with the bodice
 - (c) A long sleeve with fullness added to both the cap seamline and the wristline
 - (d) Both a and c
8. The leg-of-mutton sleeve
 - (a) Is also called a Juliet sleeve
 - (b) Resembles a lamb's leg
 - (c) Simulates a combined puff and fitted sleeve
 - (d) Both b and c
9. The collar style line refers to
 - (a) The edge which is attached to the garment
 - (b) The outer edges of a collar and is the creation of the designer
 - (c) Both the inner and outer part of the collar
 - (d) All of the above
10. The breakline on a collar is
 - (a) The foldline that occurs where a lapel turns back
 - (b) The line formed where the collar stand and fall meet
 - (c) The part that extends from the top of the stand to the neckline
 - (d) All of the above

[20 marks]

- B. Refer to the provided dress Designs 1 and 2 on the next page. Analyze and briefly describe them highlighting their differences. Make reference to the torso blocks provided in the Appendix page and briefly give the method of work in pattern manipulation for **Design 1**. Draw the final pattern, with pattern markings, for use in pattern layout and cutting out.



Design 1

Design 2

[20 marks]
[Total marks = 40]

Question 2

(a) Compare and contrast the following terms

i. Basic ease

versus

Design ease

PAGE 5 OF 8

ii. Design line

iii. Pivot point

iv. Armscye

v. Parallel darts

vi. Straight grainline

Princess-line

Pivot circle

Neckline

Fan darts

Place on fold

vii. Partial yoke

Yoke

- (b) Give and briefly explain the two methods used as the basis for International Standard Body Measurements.

[2 marks]

[Total marks = 30]

Question 3

- (a) Using diagrams **only**, show the difference in asymmetrical and symmetrical designs.
[4 marks]
- (b) Briefly discuss the difference between the basic bodice block and the sleeveless bodice with reference to making an armhole facing. Make use of diagrams to support your answer.
[8 marks]
- (c) With the aid of notes and diagrams show the steps you would take in lowering a neckline on a bodice front, and then designing a combined neckline and armhole facing for it. Indicate all pattern markings on the final facing pattern piece.

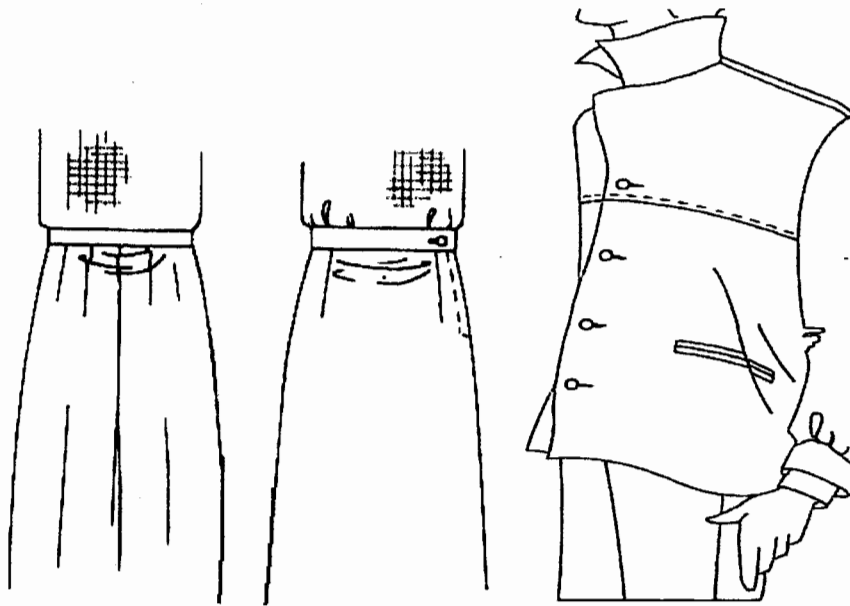
[18 marks]

[Total marks = 30]

Question 4

Whenever drafting blocks for individual figures it is important that the list of individual measurements be accurately taken and carefully checked against the list of standard measurements. Despite this, there are however certain figure problems that will require adjustments to the block.

- a). Refer to the diagrams that follow below and identify the fitting problems of the **three** designs. With the aid of notes and diagrams suggest corrective measures to be taken in order to achieve a better fit.



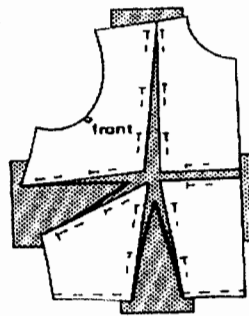
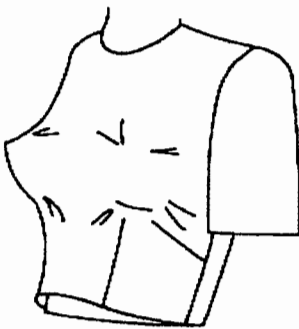
Design 1

Design 2

Design 3

[12 marks]

- b). With reference to the diagrams below discuss the fitting problems and the corrective measures taken.



[8marks]

- c). Currently, most sizes are not expressed as body measurements, but as lettered sizing. Give the **four** mostly used lettered size designations and indicate the size range for each category.

[10 marks]

[Total marks = 30]

APPENDIX A

