



**2<sup>ND</sup> SEM. 2007/2008**

**PAGE 1 OF 5**

**UNIVERSITY OF SWAZILAND**

**FINAL EXAMINATION PAPER**

**PROGRAMME : DIPLOMA IN HOME ECONOMICS  
EDUCATION & HOME ECONOMICS  
YEAR III**

**COURSE CODE : TAD 302**

**TITLE OF PAPER : APPAREL DESIGN: CONSTRUCTION**

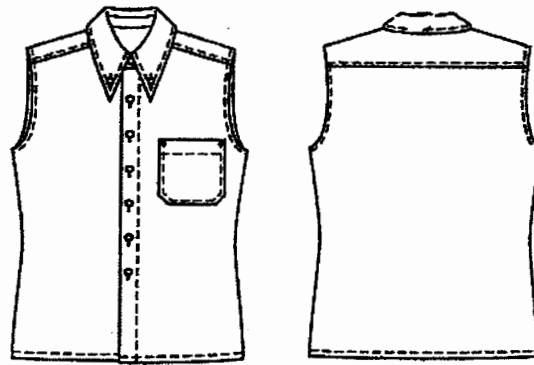
**TIME ALLOWED : TWO (2) HOURS**

**INSTRUCTIONS : ANSWER QUESTION ONE (1)  
AND ANY OTHER (2) QUESTIONS**

**DO NOT OPEN THIS PAPER UNTIL PERMISSION HAS BEEN  
GRANTED BY THE CHIEF INVIGILATOR**

**QUESTION 1**

- a) i) For boys: Using quarter scale blocks provided, adapt them to the shirt shown.



15

- i) Using the patterns adapted in a i) above, calculate amount of fabric for full scale shirt.

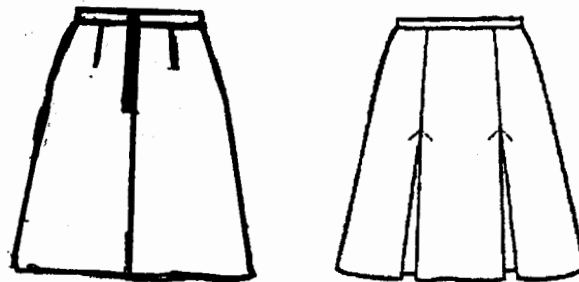
10

- iii) Specify the construction sequence and processes for the shirt in a i) above.

15

OR

- a) i) For girls: Using quarter scale blocks provided, adapt them to the skirt shown.



Back

Front

15

- ii) Using the patterns adapted in a i) above, show the layout plan for the skirt.

10

- iii) Specify the construction sequence and processes for the skirt in a) i) above.

15

**[Total marks = 40].**

**QUESTION 2**

- a) List and describe **five (5)** equipment /tools provided by H.E. Department in TAD laboratory. Discuss how each of the tools helped you to achieve the garment to fit. 15
- b) As Woolworth clothes buyer for Swaziland shops, discuss the characteristics of good workmanship you would use to select quality ready-to-wear clothes. 15
- [Total marks = 30]**

**QUESTION 3**

- a) For boys: Discuss the fitting steps you followed for the unbleached calico pair of trousers. 15 .
- OR
- For girls: Discuss the fitting steps you followed for the Toile/unbleached calico dress. 15
- b) Discuss guidelines you observed when choosing fabric for the garments to fit. 15
- [Total marks = 30]**

**QUESTION 4**

- a) Discuss the fabric preparation rules you observed before laying out garment to fit. 8
- b) If your client had a round face, discuss the necklines you would recommend for him/her to modify appearance of facial shape. 4
- b) List and discuss **five (5)** reasons why you sewed a test blouse or test shirt? 10
- d) If your client was tall and thin because of her/his HIV status, what colour scheme would you design for her/him that would be more flattering. Justify your answer. 4
- e) Which interfacings did you use on the projects, where and why? 4
- [Total marks = 30]**

