



1ST SEM. 2007/2008

PAGE 1 OF 3

UNIVERSITY OF SWAZILAND

FINAL EXAMINATION PAPER

**PROGRAMME : DIPLOMA HOME ECONOMICS AND
HOME ECONOMICS EDUCATION
YEAR III**

COURSE CODE : FRHD 302

TITLE OF PAPER : HOUSING

TIME ALLOWED : TWO (2) HOURS

**INSTRUCTIONS : ANSWER QUESTION ONE (1)
AND ANY OTHER (2) QUESTIONS**

**DO NOT OPEN THIS PAPER UNTIL PERMISSION HAS BEEN
GRANTED BY THE CHIEF INVIGILATOR**

Question 1

- a) A young couple with a baby wants to buy their own home. They visit an estate agent who shows them a plan for a townhouse in a new complex (figure 1). Examine all aspects of the plan critically and evaluate it on the basis of evaluation criteria. 16

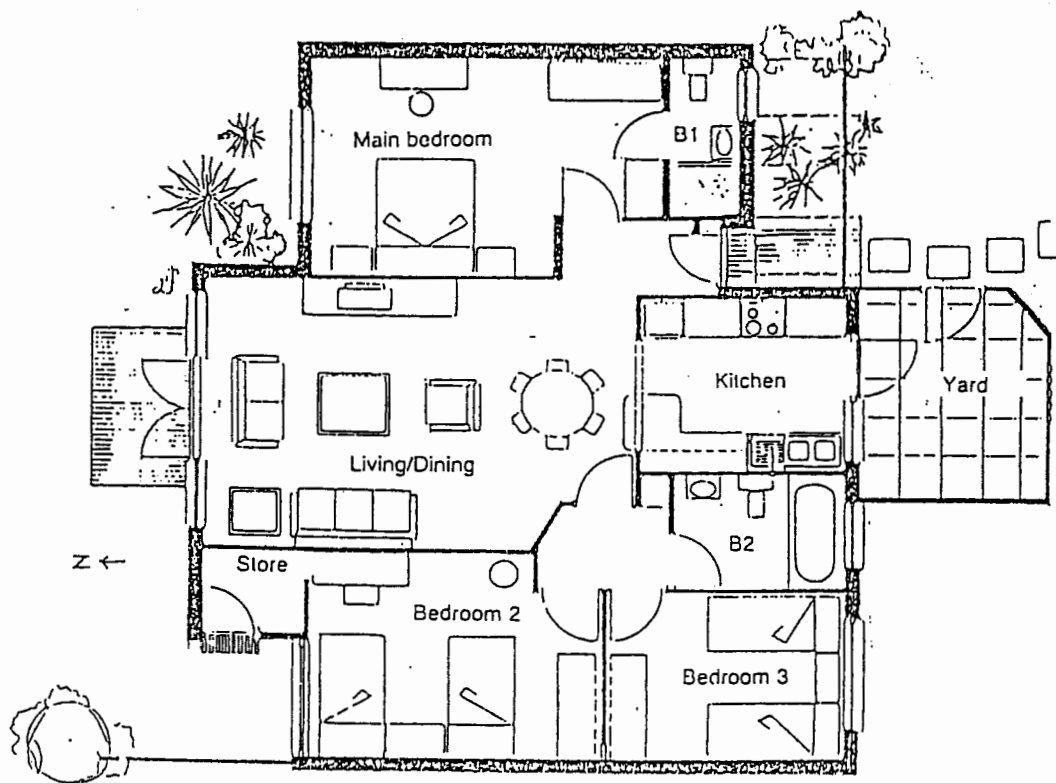


Figure 1: A Floor Plan for a Town House

- b) *"Housing types can be classified according to the population density per hectare of land and it includes low density housing, medium density housing, and high density housing".*
- i. What is low density housing? 2
 - ii. Explain its advantages and disadvantages. 8

- c) What is meant by “Dual- Purpose Room”? What points will you consider while planning dual-purpose room? 14
- [Total marks=40]

Question 2

- a) Explain in detail the criteria of choosing site for house construction? 15
- b) What is meant by “Dimensions of colour”? Explain its importance in interior décor. 15

[Total marks=30]

Question 3

“Line is a basic element of design and art, and contributes greatly towards the overall mood created in any arrangement”.

- a) Describe different types of line and its effect in interior décor with an appropriate example. 24
- b) Explain the importance of balance in interior décor. 6

[Total marks=30]

Question 4

Write short notes on the following terms associated with housing.

- a) Economical advantages of renting home 6
- b) Work or functional area 4
- c) Monochromatic colour scheme 6
- d) Procedure for making a colour scheme for a room. 14

[Total marks=30]