



**2<sup>ND</sup> SEM. 2006/2007**

**PAGE 1 OF 4**

**UNIVERSITY OF SWAZILAND**

**SUPPLEMENTARY EXAMINATION PAPER**

**PROGRAMME : DIPLOMA IN HOME ECONOMICS  
EDUCATION & HOME ECONOMICS  
YEAR III**

**COURSE CODE : TAD 302**

**TITLE OF PAPER : APPAREL DESIGN: CONSTRUCTION**

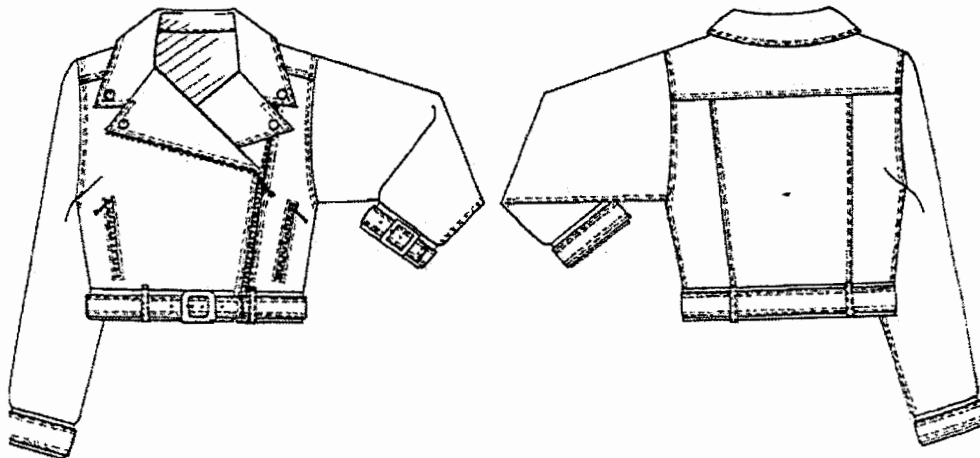
**TIME ALLOWED : TWO (2) HOURS**

**INSTRUCTIONS : ANSWER QUESTION ONE (1)  
AND ANY OTHER (2) QUESTIONS**

**DO NOT OPEN THIS PAPER UNTIL PERMISSION HAS BEEN  
GRANTED BY THE CHIEF INVIGILATOR**

**QUESTION 1 [COMPULSORY]**

- a) Define croquis. Why is this crucial for a designer? **[3 marks]**
- b) Refer to the given design and indicate the ten points you would highlight on the specification sheet for quality assurance purposes in production.

**[15 marks]**

- c) You have a friend who needs advice in building up their wardrobe. Based on the **three** requirements for a good fit what suggestions would you give? **[3 marks]**
- d) You have been asked to serve in a panel of judges who have been tasked with assessing class projects during modeling. What **five** checkpoints would you suggest should be the key for a quality outfit? **[15 marks]**
- e) List **four** components of a cost sheet? **[4 marks]**

**[Total = 40 marks]****QUESTION 2**

- a) Using the croquis provided in the appended page, draw the front and back view of the outfit you constructed as a final class project.

**[10 marks]**

With reference to the above design

- i. Make a layout plan or sketch
- ii. Outline the order of work.

**[8 marks]****[12 marks]****[Total = 30 marks]**

**QUESTION 3**

- a) Fabrication means selecting or creating a style for a fabric. The following fabric characteristics determine fabric suitability for a specific style. Discuss
- i. Surface interest
  - ii. Weight
  - iii. Texture or hand
  - iv. Fibre
- b) Define pattern grading.
- c) Name **two** methods of pattern grading.
- d) Suggest a possible pattern piece that falls into the following categories:
- i. Inward curve
  - ii. Outward curve

**[20 marks]****[1 mark]****[1 mark]**

With the aid of diagrams describe the treatment of each in garment construction.

**[8 marks]****[Total = 30 marks]****QUESTION 4**

- a) Compare and Contrast
- i. Commercial pattern vs Industrial pattern

---



---



---



---

- ii. Lay plan (commercial patterns) vs Industrial Marker

---



---



---



---

- iii. Pattern making vs Pattern alteration

---



---



---



---

**PAGE 4 OF 4**

## iv. Notching vs Clipping

---



---



---



---

## v. Trimming vs Layering

---



---



---



---

**[15 marks]**

- b) The following blouse has a yoke that extends to the back but without a shoulder seam. Analyze the design and draw the pattern pieces. Label.

**[10 marks]**

Mark-in the pattern markings as they would appear on the commercial pattern on the following pieces:

- i. Sleeve
- ii. Blouse front

**[5 marks]****[Total = 30 marks]**

## Appendix A

