

2nd SEM. 2006/2007



PAGE 1 OF 6

UNIVERSITY OF SWAZILAND

SUPPLEMENTARY EXAMINATION PAPER

**PROGRAMME : DIPLOMA IN HOME ECONOMICS &
HOME ECONOMICS EDUCATION
YEAR III**

COURSE CODE : TAD 301

**TITLE OF PAPER : INTRODUCTION TO PATTERN
DRAFTING**

TIME ALLOWED : TWO (2) HOURS

**INSTRUCTIONS : ANSWER QUESTION ONE (1)
AND ANY OTHER (2) QUESTIONS**

**DO NOT OPEN THIS PAPER UNTIL PERMISSION HAS BEEN
GRANTED BY THE CHIEF INVIGILATOR**

QUESTION 1

a. Define the following terms:

i. Nett Patterns

ii. Toile Patterns

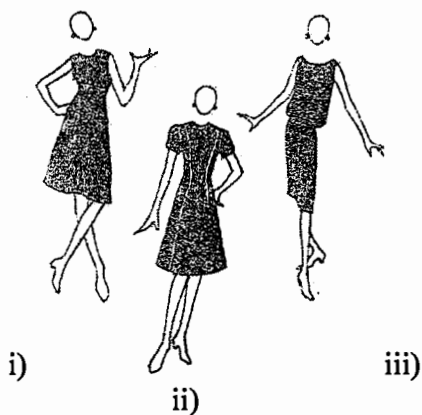
iii. Industrial Patterns

iv. Commercial Patterns

[6 marks]

b. Basic blocks are manipulated to come up with various silhouettes. Label the **three** given silhouettes and briefly explain the pattern making process from the basic blocks of your choice.

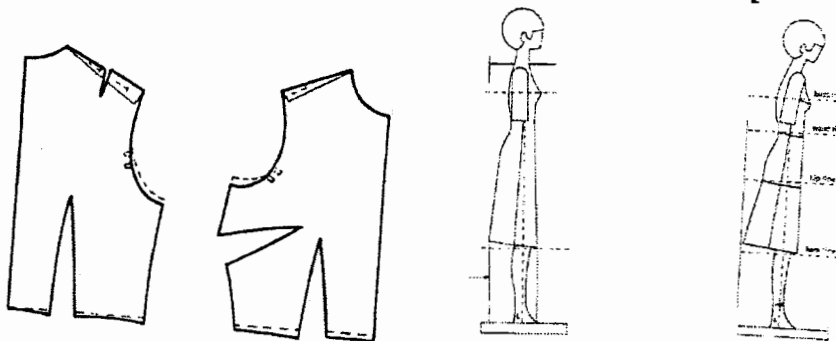
[9 marks]



PAGE 3 OF 6

- c. The following diagrams are representative of common figure problems and the adaptations made on patterns to flatter the figure. For each diagram state and describe the figure problem and briefly discuss the relevant pattern adaptation process.

[15 marks]



- d. Define Pattern Grading.

[2 marks]

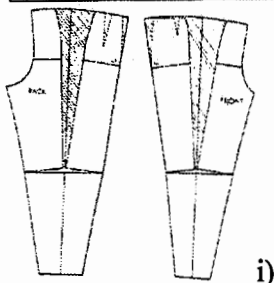
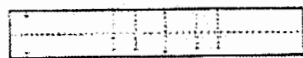
- e. Briefly explain manual and computer grading to show the difference. What are the three advantages of computer grading?

[8 marks]

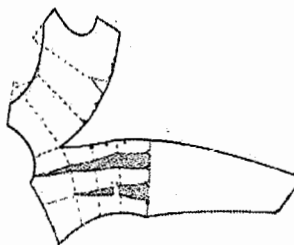
[Total marks = 40]

QUESTION 2

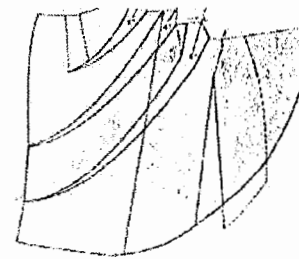
- a. Refer to the pattern pieces below and sketch the final outfit as it would appear when constructed. Draw the final pattern pieces with pattern markings for (i), (ii) and (iii). [18 marks]



i)



ii)



iii)

PAGE 4 OF 6

b. Compare and contrast.

i. Cap sleeve

Set-in sleeve

ii. Bishop sleeve

Bell sleeve

iii. Leg-of-mutton

Tailored sleeve

iv. Sailor collar

Chelsea collar

v. Mandarin collar

Shawl collar

vi. Shirt collar

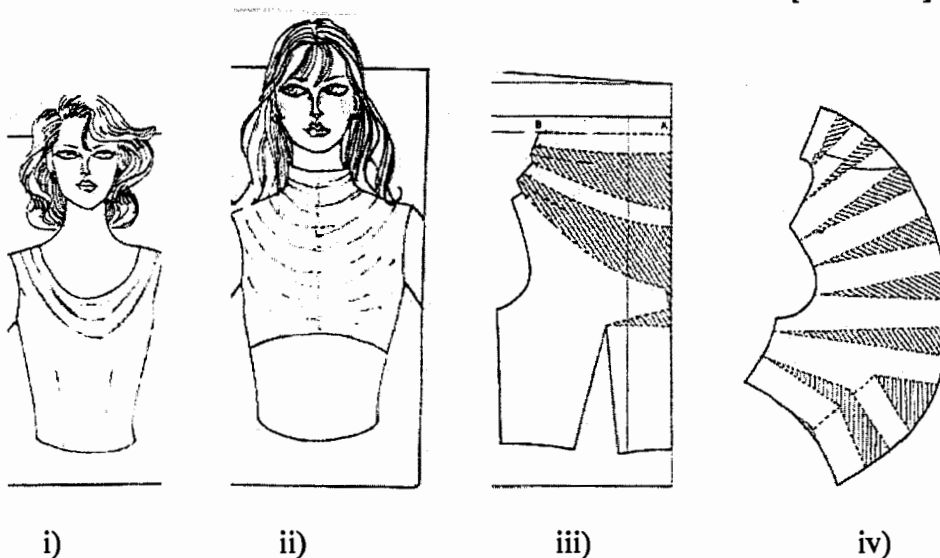
Convertible collar

[12 marks]

[Total marks = 30]

QUESTION 3

- a. With the aid of diagram(s) briefly explain built-up necklines. [5 marks]
- b. With reference to the following designs indicate the relevant patterns and label the pattern pieces. Analyze the designs and briefly describe the design features.

[10 marks]

- c. State the **three** main collar classifications and give two examples of collars per each category.

[6 marks]

- d. With the use of clearly labeled diagrams (working and final patterns), discuss the basic steps in the making up of a pattern for a collar cut in one with the bodice.

[9 marks]**[Total marks = 30]****QUESTION 4**

- a. The following are important terms in pattern making. Briefly explain each term.
- i. Godet

- ii. Gore

PAGE 6 OF 6

iii. Hipline

iv. Bustline

v. Pivoting

[10 marks]

b. Line is one of the elements of design. Briefly discuss the visual illusions created on the figure by the use of these lines.

i. Horizontal Style Lines

ii. Curved Lines

iii. Vertical Style Lines

[9 marks]

c. Compare the One-piece Sleeve Block with the Two-piece Sleeve Block both in the method of drafting and in appearance. When would each sleeve be used? Use illustrations to support your answer.

[11 marks]

[Total marks = 30]