

169

1ST SEM. 2006/2007



PAGE 1 OF 6

UNIVERSITY OF SWAZILAND

FINAL EXAMINATION PAPER

**PROGRAMME : DIPLOMA IN HOME ECONOMICS &
HOME ECONOMICS EDUCATION
YEAR III**

COURSE CODE : TAD 301

**TITLE OF PAPER : INTRODUCTION TO PATTERN
DRAFTING**

TIME ALLOWED : TWO (2) HOURS

**INSTRUCTIONS : ANSWER QUESTION ONE (1)
AND ANY OTHER (2) QUESTIONS**

**DO NOT OPEN THIS PAPER UNTIL PERMISSION HAS BEEN
GRANTED BY THE CHIEF INVIGILATOR**

QUESTION 1

a. The following are familiar terms in Pattern Making. Compare and contrast with the use of illustrative diagrams to show differences in the pattern pieces and pattern markings.

i. Pattern Drafting

Flat Pattern Making

ii. Darts

Dart tucks

iii. Dart-equivalent Princess Line

Princess Design Line

iv. Flared Skirt

Paneled Skirt

v. Basic Block

Stylized Pattern

vi. Neckline Facings

PAGE 3 OF 6

Collars

vii. Yoke

Mid-riff

viii. Mandarin Collar

Shawl Collar

ix. Raglan Sleeve

Bishop Sleeve

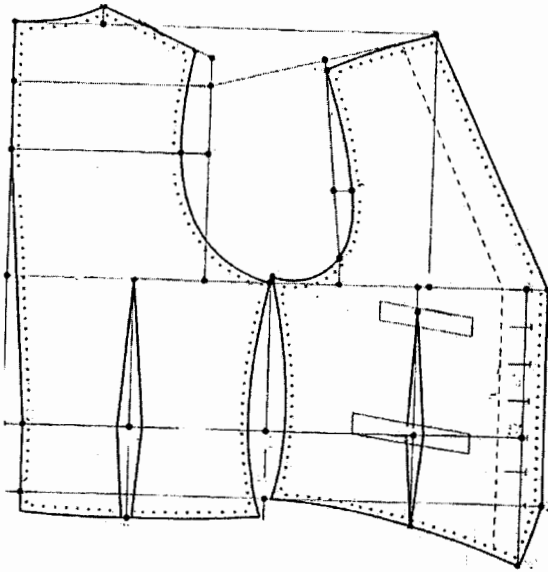
x. Full-roll Collar

Flat Collar

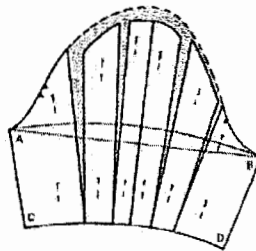
[20 marks]

PAGE 4 OF 6

- b. Refer to the pattern draft below and sketch the finished outfit. Show both the front and back views. **[10 marks]**



- c. List in the order of working, the basic block manipulation steps for the illustrated sleeve design and working pattern. Draw the finished sleeve pattern with pattern markings. **[10 marks]**



[Total marks = 40]

QUESTION 2

- a. Define cowls. What are the two methods of introducing cowls into a pattern? Of the two methods which one would you recommend for better results and why? **[5 marks]**
- b. Explain the differences between standard basic blocks and blocks for individual figures. **[3 marks]**

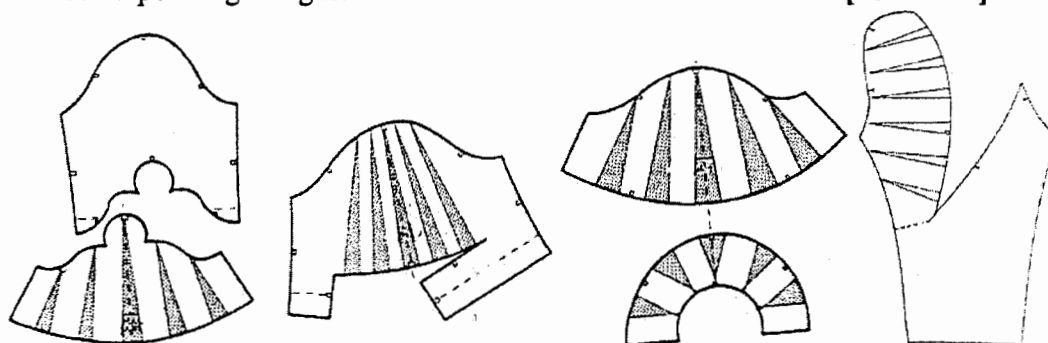
PAGE 5 OF 6

- c. When drafting blocks for an individual with very pronounced figure faults what procedure should one take? [2 marks]
- d. In pattern making designers use three different types of pattern. State and briefly describe these types highlighting the differences. [9 marks]
- e. Body measurements for drafting menswear are reflected on the diagrams in the appended page. Label the selected ten measurements. [5 marks]
- f. What are the body measurements required to draft a men's trouser block?
i.
ii.
iii. [3 marks]
- g. With the aid of diagram(s) explain the following style features
i. Lapel
ii. Roll line
iii. Collar stand [3 marks]

[Total marks = 30]

QUESTION 3

- a. Define the following terms:
i. Asymmetrical
ii. Silhouette
iii. A-line
iv. Blouson [6 marks]
- b. From the given set of working patterns draw the final patterns and label, also draw the corresponding designs. [16 marks]



- c. Define pleats. Give three examples. Choose one pleat from the given list and show the working and final patterns. Label and indicate pattern markings. [8 marks]

[Total marks = 30]

QUESTION 4

- a. Define Pattern Grading [2 marks]
- b. List two methods of pattern grading [1 marks]
- c. What method would be most appropriate for the Apparel Manufacturing industry and why? [2 marks]
- d. What effect do the following features have on designs?
 - i. Vertical lines
 - ii. Diagonal lines
 - iii. Dark colours
 - iv. Bright colours[6 marks]
- e. Refer to the following two designs. What effect does the contrast between light and dark have on the models? [4 marks]



- f. The diagrams that follow below are representative of figure problems and the adaptations made. For each diagram state and describe the figure problem and briefly discuss the relevant pattern adaptation process. [15 marks]

