



**2<sup>ND</sup> SEM. 2005/2006**

**PAGE 1 OF 5**

**UNIVERSITY OF SWAZILAND**

**FINAL EXAMINATION PAPER**

**PROGRAMME : DIPLOMA IN HOME ECONOMICS  
EDUCATION & HOME ECONOMICS  
YEAR III**

**COURSE CODE : TAD 302**

**TITLE OF PAPER : APPAREL DESIGN: CONSTRUCTION**

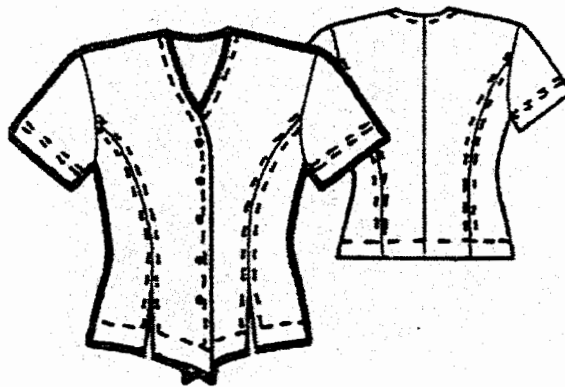
**TIME ALLOWED : TWO & A HALF (2 1/2) HOURS**

**INSTRUCTIONS : ANSWER QUESTION ONE (1)  
AND ANY OTHER (2) QUESTIONS**

**DO NOT OPEN THIS PAPER UNTIL PERMISSION HAS BEEN  
GRANTED BY THE CHIEF INVIGILATOR**

QUESTION 1

- a i) For girls: Using quarter scale blocks provided, draft the blouse shown.



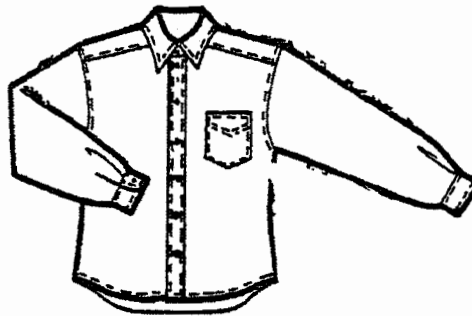
[15]

- ii. Using the patterns drafted in a i) above, show the layout plan for the blouse [10]

- iii. Develop the construction sequence for the blouse in a i) above [15]

OR

- a i) For boys: Using quarter scale blocks provided, draft the shirt shown.



[15]

- ii. Using the patterns drafted in a i) above, show the layout plan for the shirt [10]

- iii. Develop the construction sequence for the shirt in a i) above.

[15]

**[Total marks = 40]**

## PAGE 3 OF 5

**QUESTION 2**

- a. As a quality controller, discuss the characteristics of good workmanship you would use to judge quality of ready to wear clothes. [15]
- b. List and discuss **five (5)** reasons for sewing either a **test shirt** or a **test skirt**. [15]

[Total marks = 30]

**QUESTION 3**

- a. As an external examiner for junior certificate, list and describe **five (5)** standards of good fit for evaluating form 3 garments. [15]
- b. Explain how you can use the elements of design now or in the future. [4]
- c. If your client is going to Lesotho in winter, which skirt lengths would you sew for her and why. [4]
- d. For summer wear, which two bodice types you would design and sew for your female client? Justify your answer. [4]
- e. Discuss the properties of interfacing used often and give examples. [3]

[Total marks = 30]

**QUESTION 4**

- a. List and describe five (5) fabric selection criteria you would use to purchase fabric for your garment to fit. [10]
- b. Using the design element of form and shape, draw and label the human figure shapes without flesh that every clothing designer should know. [10]
- c. Which figure will benefit from using a sailor collar and why? [2]
- d. What are the similarities and differences between the patch pocket and the kangaroo pocket? [4]
- e. The tiered skirt you drew, would be suitable for which figure and why? [2]
- f. According to the element form and shape, Miss World human figure is divided into how many parts and why? [2]

[Total marks = 30]

