

**2<sup>nd</sup> SEM. 2005/2006**



**PAGE 1 OF 3**

**UNIVERSITY OF SWAZILAND**

**SUPPLEMENTARY EXAMINATION PAPER**

**PROGRAMME : DIPLOMA IN HOME ECONOMICS &  
HOME ECONOMICS EDUCATION YEAR III**

**COURSE CODE : TAD 301**

**TITLE OF PAPER : INTRODUCTION TO PATTEN DRAFTING**

**TIME ALLOWED : TWO (2 ½) HOURS**

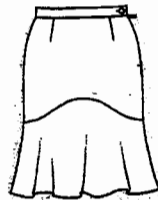
**INSTRUCTIONS : QUESTION ONE IS COMPULSORY  
ANSWER ANY OTHER (2) QUESTIONS**

**DO NOT OPEN THIS PAPER UNTIL PERMISSION HAS BEEN  
GRANTED BY THE CHIEF INVIGILATOR**

## PAGE 2 OF 3

**QUESTION 1**

- a) By means of well labelled diagrams, discuss how you drafted a leg-of-mutton sleeve. [12]
- b) Which figure type will benefit from wearing a blouse with leg -of -mutton sleeves? Justify your answer. [4]
- c) What is pattern adaptation? [2]
- d) To create an impression of added size, which colour would you choose for your female client? Justify your answer. [4]
- e) Which texture would you choose for the graduation party and why? [4]
- f) Using half scale skirt block provided, draft the skirt shown and the waist band. Label all the patterns [16]



[Total marks = 40]

**QUESTION 2**

- a) After sewing the unbleached calico fitting dress, write first fitting procedures you followed to correct the dress [15]
- b) Using the design element of-line in garment style or pattern, draw and label to show how a short and plump figure can be made to look tall and slim.. [4]
- c) Still using the element of line, show how fabric design can be used to make a short and plump lady look tall and slim. [2]
- d) Which colour scheme can be used to create an illusion of tallness? Give a reason for your choice.. [4]
- e) Why are the non-academic ladies learning to draft and sew during the lunch hour? [5]

[Total marks = 30]

**QUESTION 3**

- a) Using dart manipulation skills, show how this curved princess style can be adapted on the bodice back before adding horizontal line as a peplum.



[10]

- b) List and describe **four (4)** components that determine the texture of a fabric.

[4 x 3=12]

- c) Which line would you use to create an illusion of height and justify your answer?

[4]

- d) Which hue would be added to red to obtain a dull intensity?

[2]

- e) Which texture would a teenager with skin acne avoid and why?

[2]

**[Total marks = 30]****QUESTION 4**

- a) After sewing the unbleached calico fitting dress, write the first fitting procedures you followed to correct the dress.

[15]

- b) By means of diagrams, show how you altered the commercial blouse pattern to shorten and lengthen.

[7]

- c) Define the term silhouette.

[2]

- d) List and discuss **three (3)** ways fabric design or fabric pattern is used by textile consumers or you.

[6]

**[Total marks = 30]**

