

2nd SEM. 2005/2006



PAGE 1 OF 3

UNIVERSITY OF SWAZILAND

SUPPLEMENTARY EXAMINATION PAPER

**PROGRAMME : DIPLOMA IN HOME ECONOMICS
EDUCATION & HOME ECONOMICS
YEAR II**

COURSE CODE : TAD 201

TITLE OF PAPER : CLOTHING CONSTRUCTION

TIME ALLOWED : TWO (2) HOURS

**INSTRUCTIONS : QUESTION ONE IS COMPULSORY
ANSWER ANY OTHER (2)
QUESTIONS**

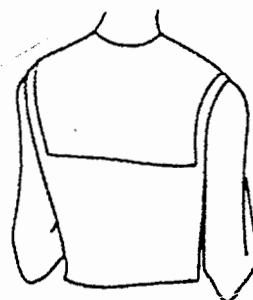
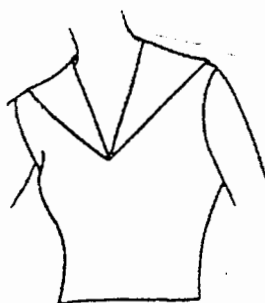
**DO NOT OPEN THIS PAPER UNTIL PERMISSION HAS BEEN
GRANTED BY THE CHIEF INVIGILATOR**

QUESTION 1

- a) By means of a well labeled diagram, show the collar terms you need to know before drafting a rolled collar.

b)

[14]



Using the principles of drafting a Peter Pan collar, draft a sailor collar [12]

- c) Present a detailed classification of collars and examples you would use for fashion and fabrics theory in form v. [14]

[Total marks = 40]

QUESTION 2

- a) How did you prepare the Peter Pan collar for attaching onto the bodice? Diagrams are necessary. [10]
- b) Using well labeled diagrams, show the steps you followed when sewing a faced slit opening. [15]
- c) Write about the usefulness of a de-touchable collar. [5]

[Total marks = 30]

QUESTION 3

- a) Classify sleeves accordingly, giving brief explanation for each group and examples. [10]
- b) Using quarter scale sleeve block, show how to draft this puffed sleeve. [10]



PAGE 3 OF 3

- c) Name five (5) decorative finishes you could apply on your projects to make them unique. Also name the projects. [10]

[Total marks = 30]

QUESTION 4

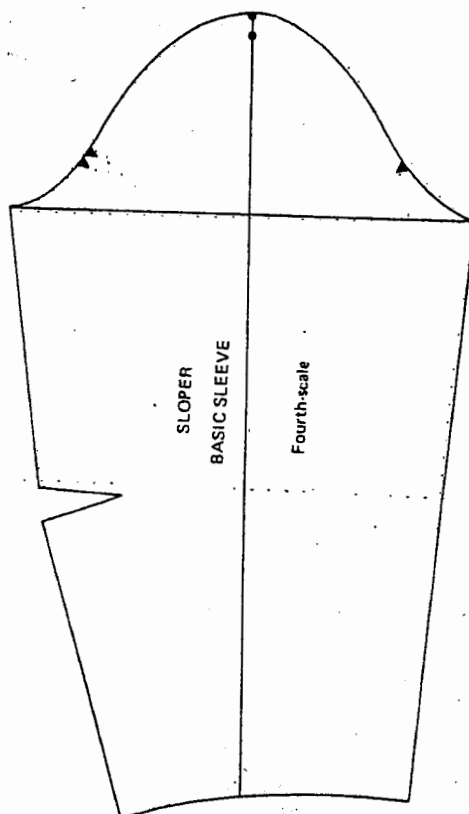
- a) If the information on the back of a commercial pattern envelope was missing, discuss the problems you would have encountered. [12]

- b) Please draw commercial pattern symbols for the following:

- i. Lay on the fold
- ii. Straight of grain
- iii. Fitting line or seam allowance
- iv. Darts
- v. Notches or balance marks

[10]

- c) Classify frills into four (4) groups, giving areas where each can be applied on garment. [8]



[Total marks = 30]

