



1ST SEM. 2005/2006

PAGE 1 OF 3

UNIVERSITY OF SWAZILAND

FINAL EXAMINATION PAPER

**PROGRAMME : DIPLOMA HOME ECONOMICS AND
HOME ECONOMICS EDUCATION
YEAR III**

COURSE CODE : FRHD 302

TITLE OF PAPER : HOUSING

TIME ALLOWED : TWO (2) HOURS

**INSTRUCTIONS : ANSWER QUESTION ONE (1)
AND ANY OTHER (2) QUESTIONS**

**DO NOT OPEN THIS PAPER UNTIL PERMISSION HAS BEEN
GRANTED BY THE CHIEF INVIGILATOR**

QUESTION 1

An expanding family with a baby wants to buy their own home. An estate agent shows them a plan for a town house in a housing complex (figure 1). The couple evaluates the plan very carefully to determine whether it meets their requirements

Discuss the couples evaluation of the plan (figure 1 on page 3) based on the following factors:

- A. size of rooms
- B. division of space
- C. zoning of rooms
- D. storage space
- E orientation of the plan
- F. extendibility
- G. safety
- H. aesthetic satisfaction.

[Total marks=40]

QUESTION 2

Evaluate the advantages and disadvantages of buying and renting a house in light of your own needs and wants.

[Total marks=30]

QUESTION 3

- 3.1 What is landscaping? 5
- 3.2 What are some of the objectives of landscaping? 5
- 3.3 What measure you will take in developing landscape design? 20

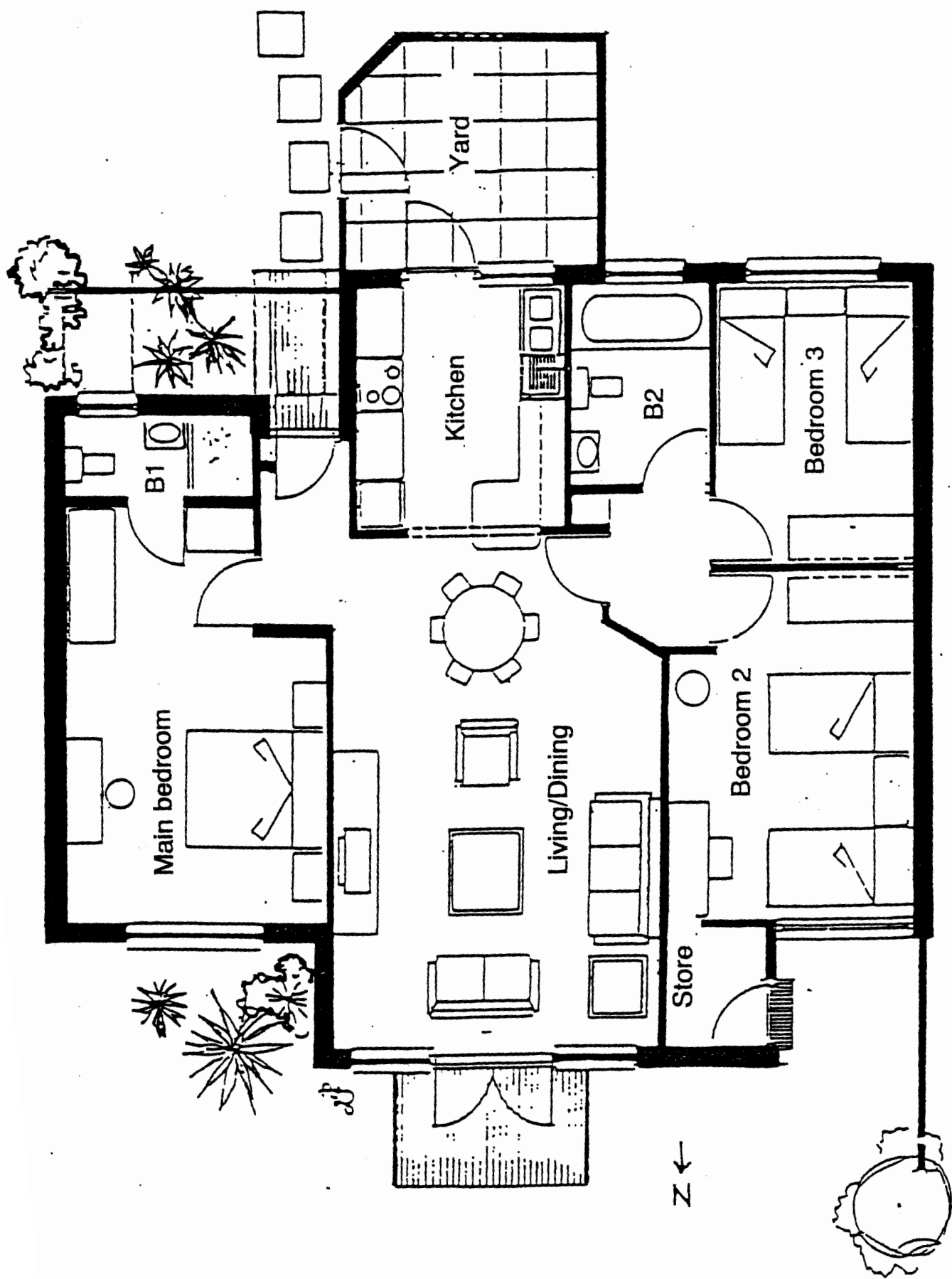
[Total marks=30]

QUESTION 4

Write short notes on the following terms as they relate to housing:

- Work centre 6
- Harmony 6
- Emphasis 6
- Balance 6
- Rhythm 6

[Total marks=30]



Plan of a townhouse.