



2ND SEM. 2005

PAGE 1 OF 6

UNIVERSITY OF SWAZILAND

FINAL EXAMINATION PAPER

**PROGRAMME: DIPLOMA IN HOME ECONOMICS
EDUCATION & HOME ECONOMICS
YEAR III**

COURSE CODE : TAD 302

TITLE OF PAPER : APPAREL DESIGN: CONSTRUCTION

TIME ALLOWED : TWO AND A HALF (2 ½) HOURS

**INSTRUCTIONS : ANSWER QUESTION ONE (1)
AND ANY OTHER (2) QUESTIONS**

**DO NOT OPEN THIS PAPER UNTIL PERMISSION HAS BEEN
GRANTED BY THE CHIEF INVIGILATOR**

APPAREL DESIGN: CONSTRUCTION.

Question 1

- a) Using the quarter scale blocks provided, show the following for the shirt shown.
- Pattern layout plan or sketch
 - Estimate the amount of fabric for quarter scale.
 - Calculate fabric for full scale shirt
 - Formulate shirt sewing steps.



8
4
4
12

OR

Show the following as far as the tunic is concerned:

- Pattern layout plan or sketch.
- Estimate amount of fabric for quarter scale pattern.
- Calculate fabric for full scale tunic.
- Formulate tunic sewing steps.

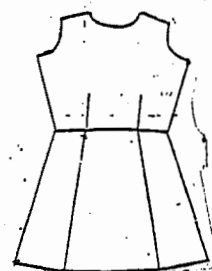
12

FRONT VIEW



8
4
4

BACK VIEW



- b) Draw the front and back of the two-piece outfit you designed and sewed. Croquis provided at the back.

12

[40]

Question 2

- Explain why you had to sew a test garment or test garments in third year? 10
- By means of well labelled diagrams, show the three dimensional shapes of the human figure. 10
- In fitting the test garment, explain the changes you had to make on the project. 10

[30]

Question 3

- Which five (5) standards for evaluating fit were used to assess the two-piece outfit you modeled? 10
- If you had a choice in choosing the fabric for the two piece, which one would you buy? 10

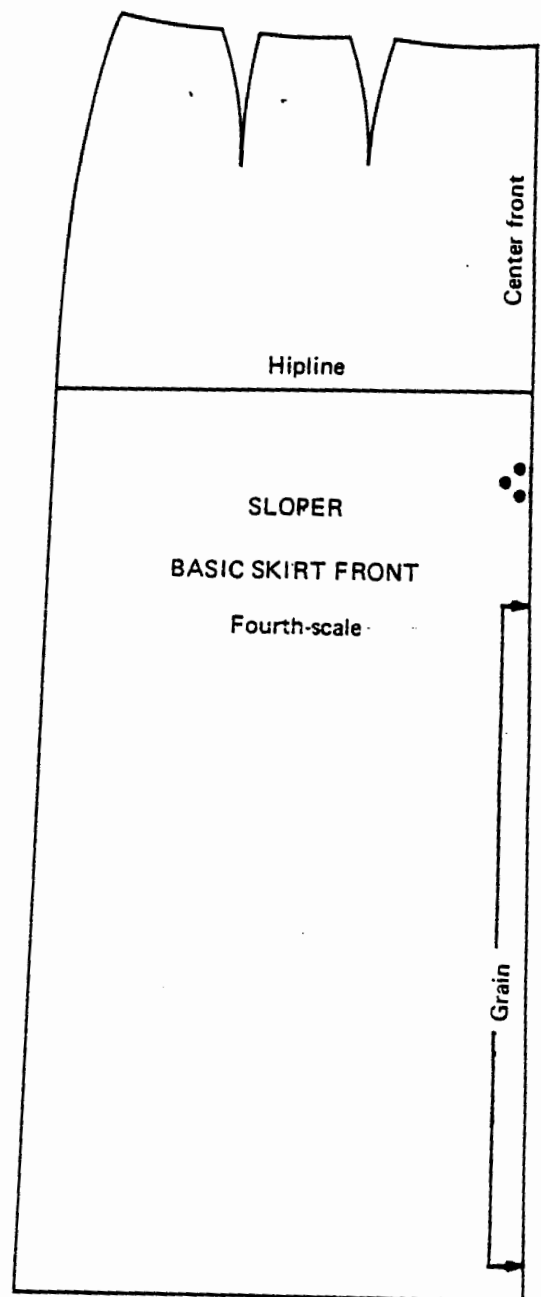
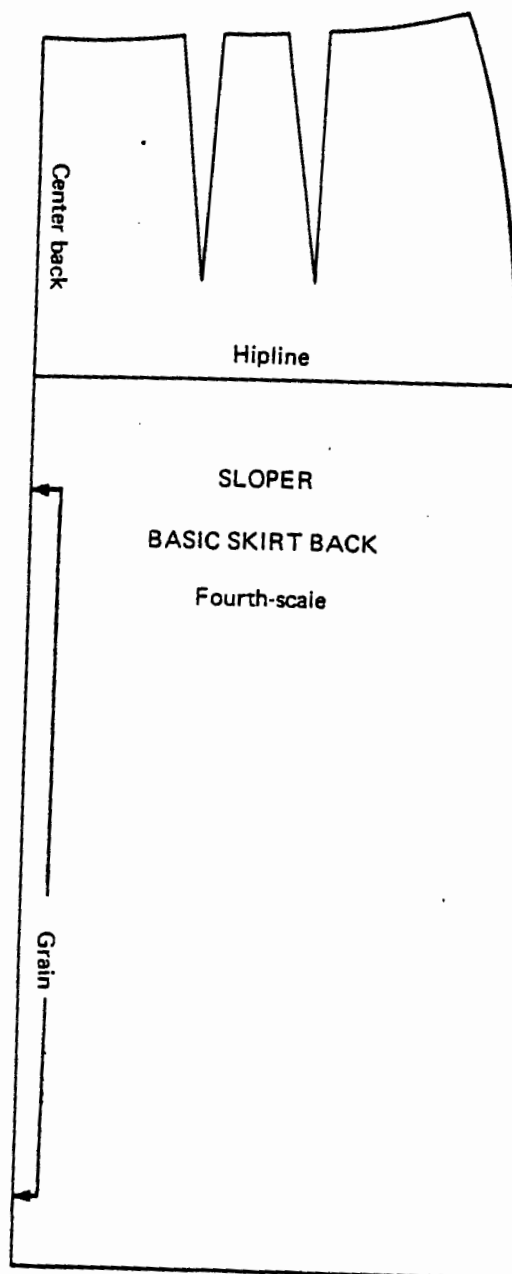
- c) Since you were sewing this project for the first time, which clothing processes you had to sew in sample form first? Name and discuss two. 10

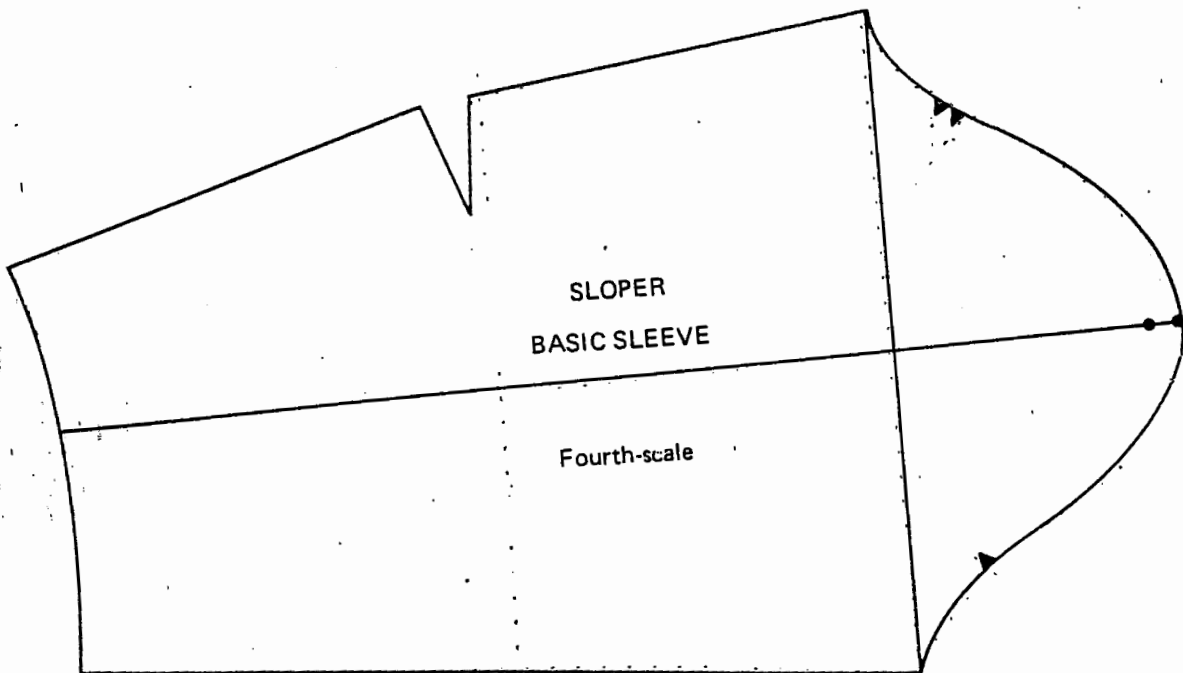
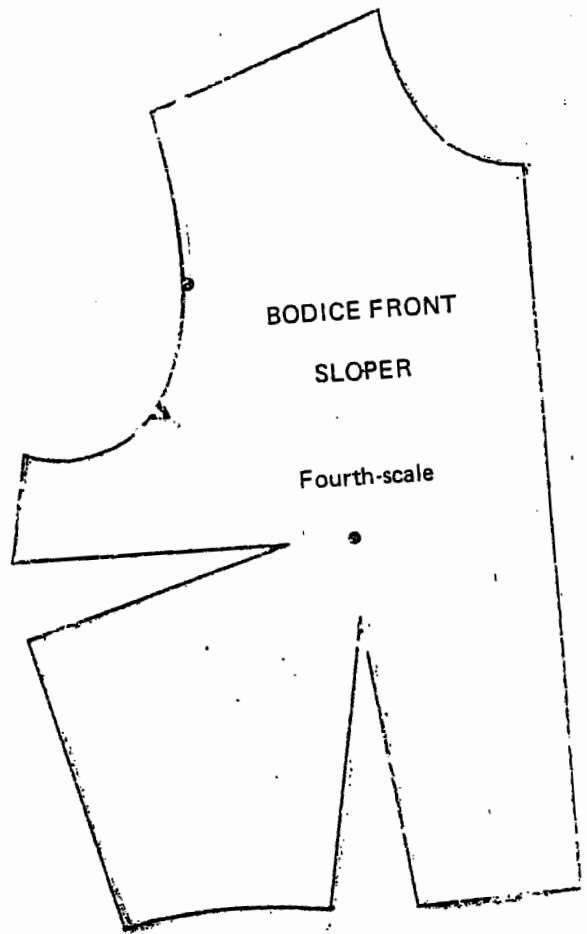
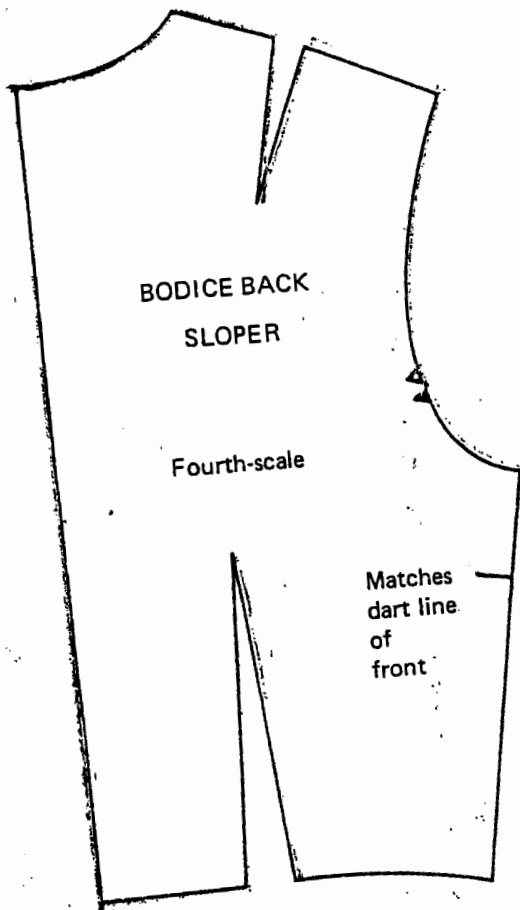
[30]

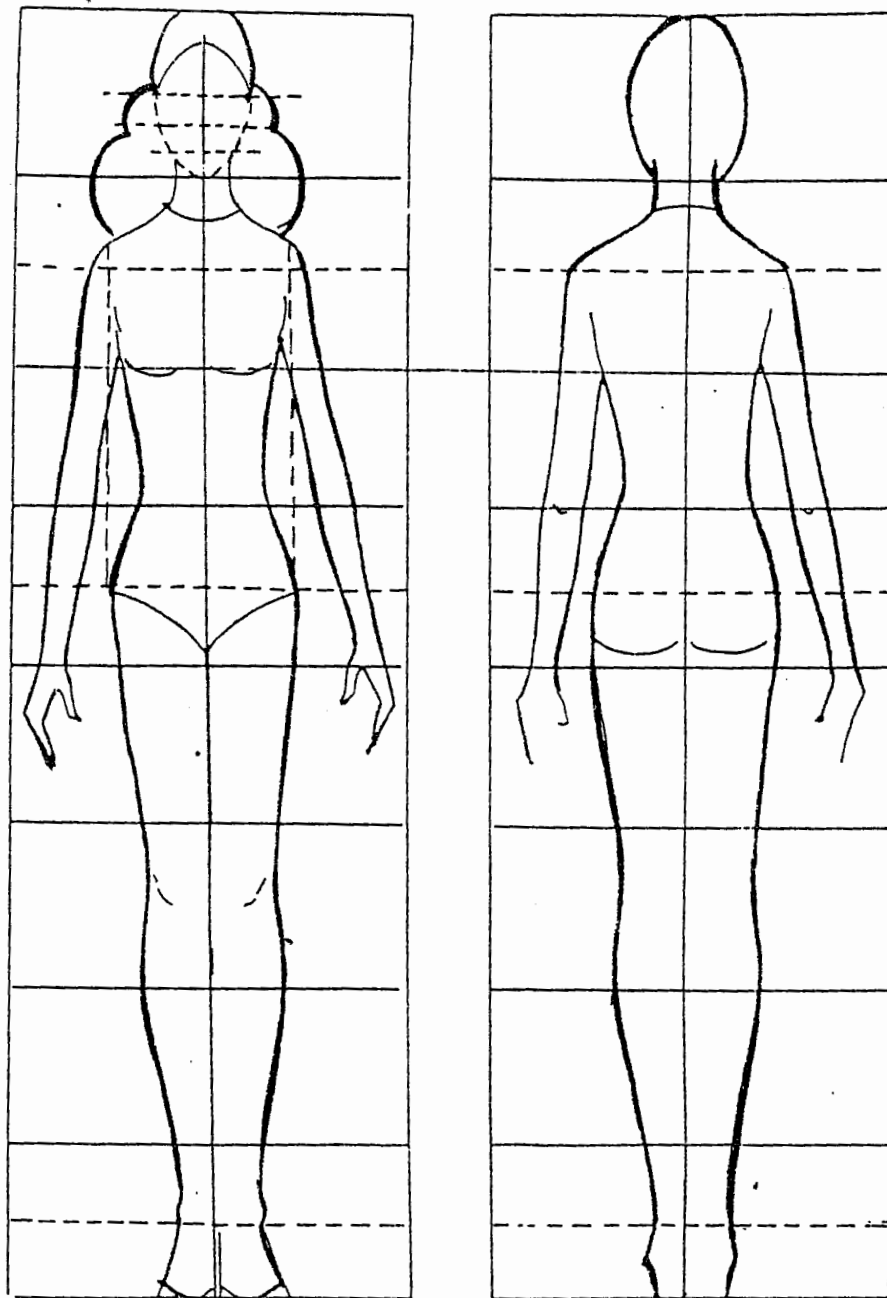
Question 4

- a) In the world of work, when and why would you use the following topics:
- i) Illustration of the project and description. 5
 - ii) Reasons for choice. 5
 - iii) List of requirements. 5
 - iv) Pattern layout plan 3
 - v) Costing 4
 - vi) Order of constructing the project. 8

[30]







Sketch your basic figure shape
using the proportions
illustrated