



**SUPPLEMENTAY 2004/2005**

**PAGE 1 OF 6**

**UNIVERSITY OF SWAZILAND**

**SUPPLEMENTARY EXAMINATION PAPER**

**PROGRAMME:** **DIPLOMA IN HOME ECONOMICS  
EDUCATION & HOME ECONOMICS  
YEAR III**

**COURSE CODE** : **TAD 301**

**TITLE OF PAPER** : **INTRODUCTION TO PATTERN  
DRAFTING**

**TIME ALLOWED** : **TWO AND HALF (2 ½) HOURS**

**INSTRUCTIONS** : **ANSWER QUESTION ONE (1)  
AND ANY OTHER (2) QUESTIONS**

**DO NOT OPEN THIS PAPER UNTIL PERMISSION HAS BEEN  
GRANTED BY THE CHIEF INVIGILATOR**

## INTRODUCTION TO PATTERN DRAFTING

### Question 1

a) Using the quarter scale blocks provided, adapt them into the shirt shown.

To show the following patterns:

- |      |                                  |   |
|------|----------------------------------|---|
| i)   | Front shirt with button stand    | 5 |
| ii)  | Back shirt with centre box pleat | 5 |
| iii) | Short sleeve                     | 5 |
| iv)  | Shirt yoke                       | 5 |



OR

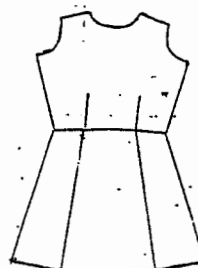
Here is a school uniform called tunic. Using quarter scale blocks, show how to adapt into tunic shown. Present the following patterns:

- |      |  |   |
|------|--|---|
| i)   | Front bodice and square neckline facing. | 5 |
| ii)  | Back bodice and round neckline facing.   | 5 |
| iii) | Back paneled skirt.                      | 5 |
| iv)  | Front paneled skirt.                     | 5 |

FRONT VIEW



BACK VIEW



b) What were the main differences you discovered when drafting one-piece sleeve in year three when compared with year two sleeve method. Tabulate your answer in this way.

YEAR THREE METHOD	YEAR TWO METHOD.
	10
c) Why is the French curve included amongst the pattern technology tools?	2
d) What type of pattern are you going to use in year three since in year two you used commercial pattern.	2
e) If the pattern you are using is either one size smaller or one size bigger, what pattern process will you use to make the correct size. Explain in detail to show your understanding.	4
f) How can you change the intensity of a colour.	2

10

c) Why is the French curve included amongst the pattern technology tools?

2

d) What type of pattern are you going to use in year three since in year two you used commercial pattern.

2

e) If the pattern you are using is either one size smaller or one size bigger, what pattern process will you use to make the correct size. Explain in detail to show your understanding.

4

f) How can you change the intensity of a colour.

2

Question 2

- a) For fresher's ball gown, which fabric and its texture would you choose and why? 3
- b) Name and discuss four components that determine the texture of a fabric. 8
- c) Name and explain two (2) colour schemes that are classified as related colour Schemes. Also name colours in each colour scheme. 6
- d) Draw two circles to show two contrasting colour schemes and label very well. 6
- e) For girls, here are body measurements required to draft size 12 bodice blocks, show calculations to half scale:
- |                    |         |
|--------------------|---------|
| i) Nape to waist   | 40 cm.  |
| ii) Bust           | 88 cm.  |
| iii) Armhole depth | 21 cm   |
| iv) Neck size      | 12.5 cm |

7

[30]

OR

For boys, convert the following size 12 measurements to half scale:

- |                      |         |
|----------------------|---------|
| i) Natural waistline | 44,5 cm |
| ii) Chest            | 100 cm  |
| iii) Scye depth      | 24,4 cm |
| iv) Neck size        | 40 cm   |
| v) Half back         | 20 cm   |

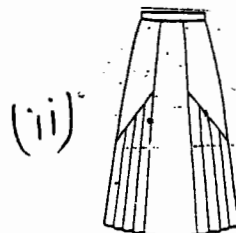
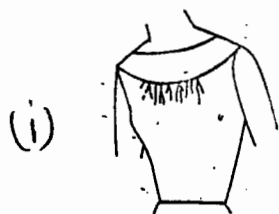
7

[30]

Question 3

- a) Demonstrate the uses of darts to show the following:

- i) Yoke style shown 9
- ii) Panel skirt shown 13



- b) Which dart manipulation method did you use in adapting patterns and why? 2
- c) Name and discuss three reasons why the consumers of textiles and fabrics like patterned fabric or fabric designs 6
- d) List and discuss the warm colours on a colour wheel. 3

[30]

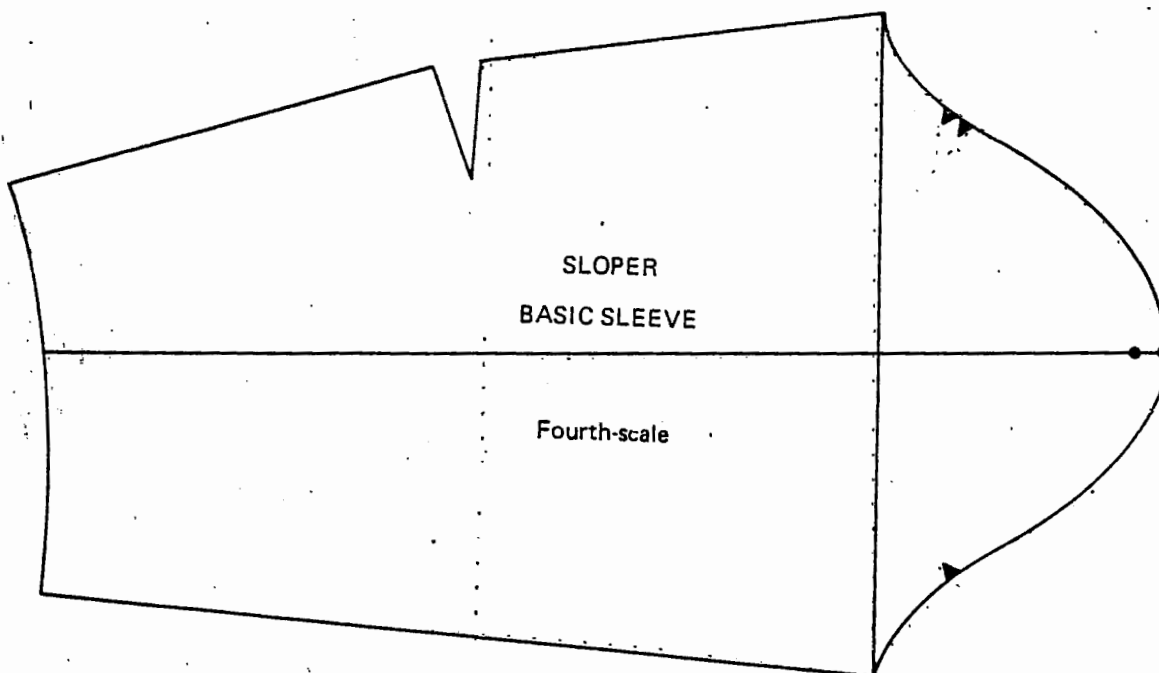
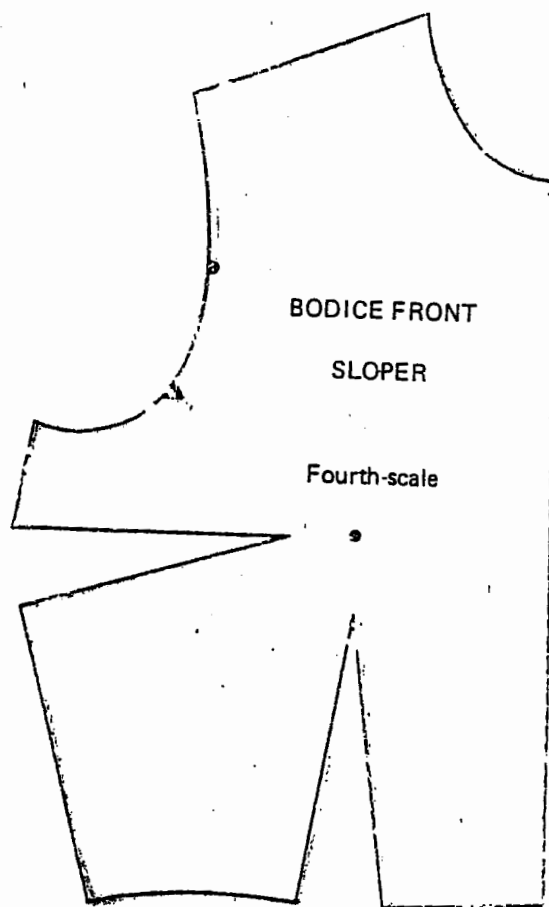
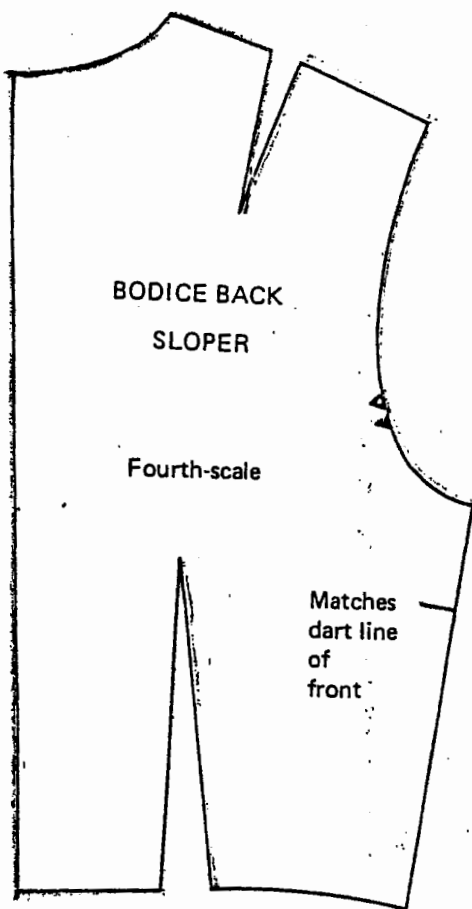
Question 4

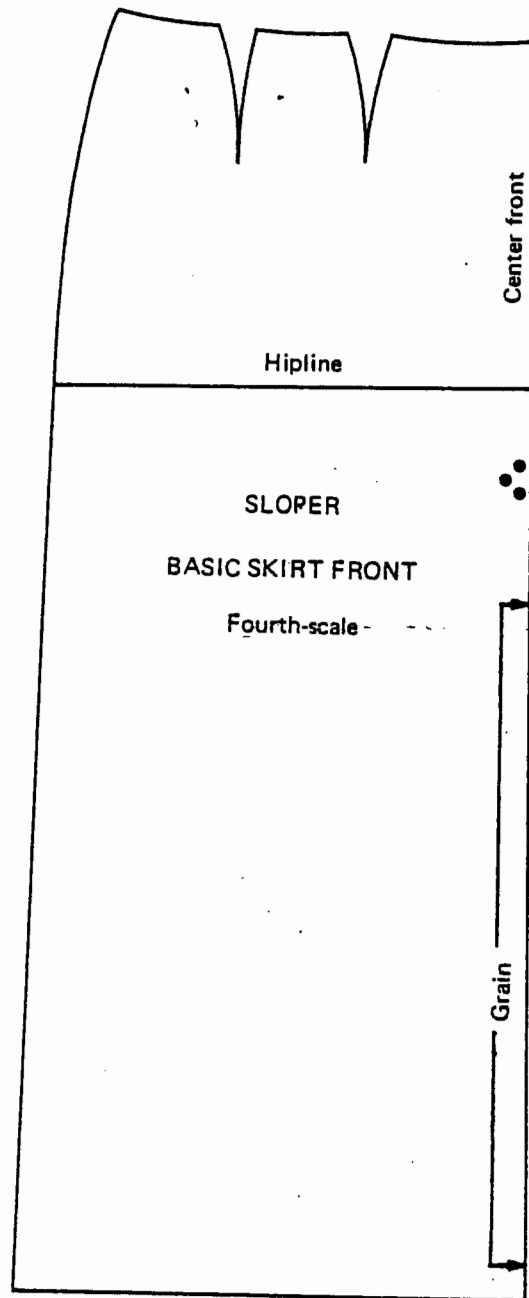
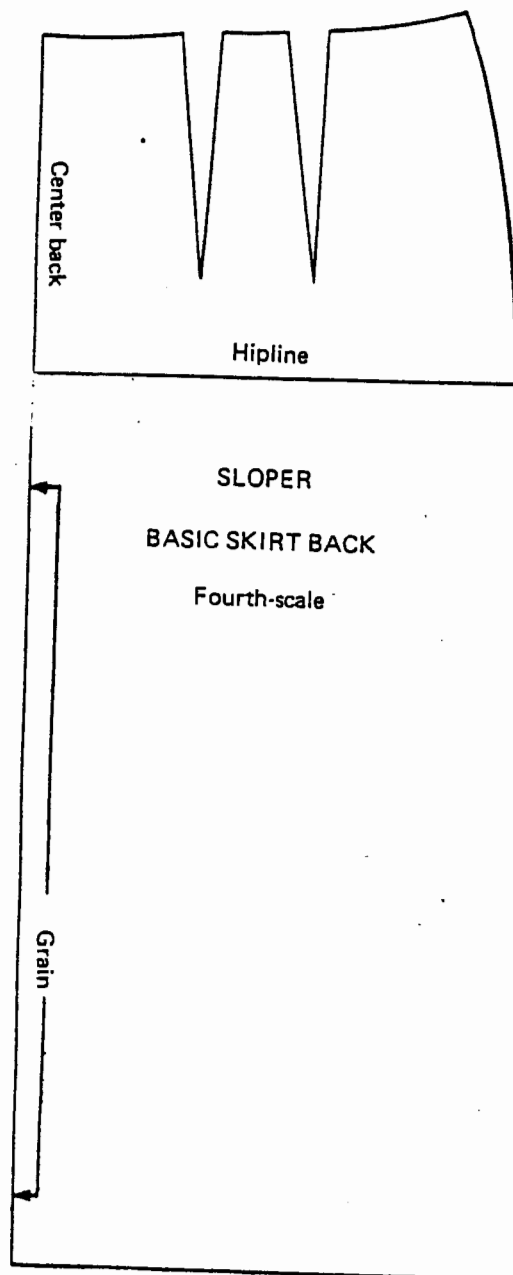
- a) Write the steps you followed when sewing unbleached calico dress or trouser blocks. (15 marks)
- b) Using the principles of lines, compare the following figures. (15 marks)



- c) Why are vertical panel skirts popular? (3 marks)
- d) Why is princess style dress popular for mature figure? (3 marks)
- e) What is a godet? How can a godet effect be included on a skirt?(3 marks)

**[Total = 30marks]**





For Question 3

151

