



**1<sup>ST</sup> SEM. 2004/2005**

**PAGE 1 OF 6**

**UNIVERSITY OF SWAZILAND**

**FINAL EXAMINATION PAPER**

**PROGRAMME:** **DIPLOMA IN HOME ECONOMICS  
EDUCATION & DIPLOMA IN HOME  
ECONOMICS YEAR III**

**COURSE CODE:** **TAD 301**

**TITLE OF PAPER:** **INTRODUCTION TO PATTERN  
DRAFTING**

**TIME ALLOWED:** **TWO AND HALF (2 ½) HOURS**

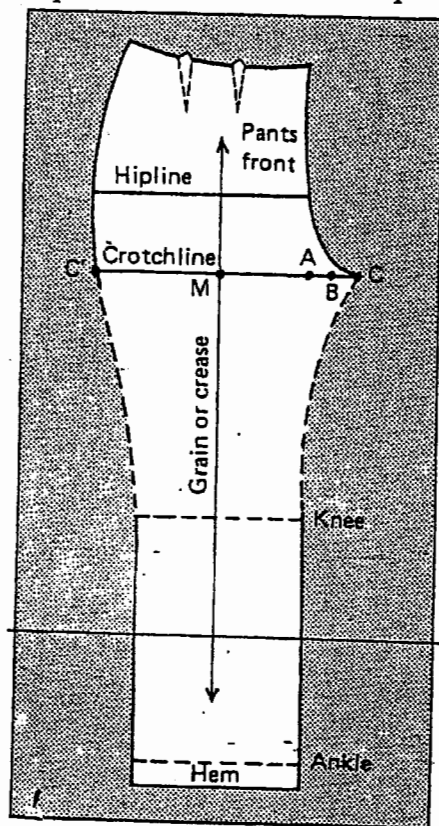
**INSTRUCTIONS:** **ANSWER QUESTION ONE (1)  
AND ANY OTHER (2) QUESTIONS**

**DO NOT OPEN THIS PAPER UNTIL PERMISSION HAS BEEN  
GRANTED BY THE CHIEF INVIGILATOR**

## INTRODUCTION TO PATTERN DRAFTING

### Question 1

- a) Define pattern drafting.. 2
- b) Name three (3) stages of pattern drafting. 3
- c) Why is it essential to conduct stage one of pattern drafting? Give two (2) reasons. 4
- d) Give two differences between blocks and patterns. 4
- e (i) For boys, which are the measurements to take when drafting trouser blocks? 10
- ii) Using diagrams, show the difference between crotch depth and crotch length 6
- iii) If you are provided with this trouser pattern, how will you design the

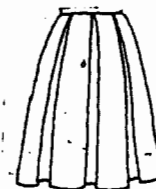


following.

- i) Shorts. 3
- ii) Jamaica shorts. 4
- iii) Bermuda shorts. 4

e) For girls, using bodice front and skirt front, show the following:

- i) Bodice yoke pattern 13
- ii) Box or inverted pleats skirt. 14.



Question 2

a) Darts are designer's greatest asset. To support this statement, discuss how darts can be converted to the following:

i) Flare on skirts. 5

ii) Seam-lines on bodice front. 5

b) Using a circle, show how a triadic colour scheme can be depicted. Name the colours you have used. 5

c) Name and discuss two (2) methods of dart manipulation. 4

d) Which colour scheme would you use for your client if she /he wished to look shorter. Name the colours you have chosen and the effect of optical illusion. 5

e) What neutral colour scheme can an obese person use to de-emphasize the figure and emphasize the face. Justify your answer. 4

f) Why did you tie a string around the waist when taking body measurements? 2

[30]

Question 3

a) After drafting the five (5) basic blocks, you had to prepare these blocks for cutting and sewing unbleached calico dress. Using five quarter scale blocks provided at the back, show seam allowances you had to add, pattern markings and pattern layout.

15

OR

For boys, name and discuss three samples you had to draft and sew at test garment stage or sample form.

15

b) Define the term texture of a fabric. 2

c) Here are some common words that describe texture of fabrics: soft, rough, smooth, shiny, dull etc. From your textile knowledge and common sense, write some of the fabrics with these textures. E.g. tweed is rough. 10

d) Why did you draft half scale basic blocks? 3

[30]

Question 4

a) Discuss the first fitting of the unbleached calico dress. For boys discuss the fitting of unbleached calico trouser block 15

b) Name and discuss two ways of achieving fabric design or fabric pattern.

6

c) Using the principle of fabric design, comment on the following:

i) A very large print on a small woman

2

ii) A huge print on a very large woman

d) Which line direction would be best choice for an outfit to be worn by a short, heavy girl who wished to appear taller and slimmer.

2

e) To create a mood of rest and repose in a costume, which line would be most appropriate to use?

2

f) Which line direction generally tends to be most flattering to the female figure?

1

[30]

[30]

f)

