



**SUPPLEMENTAY 2004/2005**

**PAGE 1 OF 5**

**UNIVERSITY OF SWAZILAND**

**SUPPLEMENTARY EXAMINATION PAPER**

**PROGRAMME:** **DIPLOMA IN HOME ECONOMICS  
EDUCATION & HOME ECONOMICS  
YEAR II**

**COURSE CODE : TAD 201**

**TITLE OF PAPER : CLOTHING CONSTRUCTION**

**TIME ALLOWED : TWO (2) HOURS**

**INSTRUCTIONS : ANSWER QUESTION ONE (1)  
AND ANY OTHER (2) QUESTIONS**

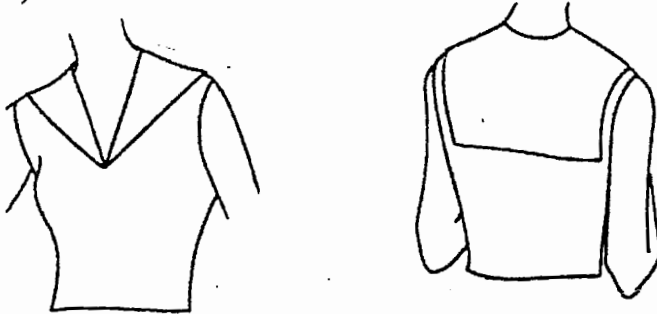
**DO NOT OPEN THIS PAPER UNTIL PERMISSION HAS BEEN  
GRANTED BY THE CHIEF INVIGILATOR**

## CLOTHING CONSTRUCTION

### Question 1

a) By means of a well labelled diagram, show the collar terms you need to know before drafting a rolled collar. 14

b)



Using the principles of drafting a Peter Pan collar, draft a sailor collar. 12

c) Present a detailed classification of collars and examples you would use for fashion and fabrics theory in form v. 14

[40]

### Question 2

a) How did you prepare the Peter Pan collar for attaching onto the bodice. Diagrams are necessary. 10

b) Using well labelled diagrams, show the steps you followed when sewing a faced slit opening. 15

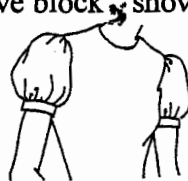
c) Write about the usefulness of a de-touchable collar. 5

[30]

### Question 3

a) Classify sleeves accordingly, giving brief explanation for each group and examples. 10

b) Using quarter scale sleeve block, show how to draft this puffed sleeve. 10



c) Name five (5) decorative finishes you could apply on your projects to make them unique. Also name the projects. 10

[30]

#### Question 4

a) If the information on the back of a commercial pattern envelope was missing, discuss the problems you would have encountered . 12

c) Please draw commercial pattern symbols for the following:

- i) Lay on the fold
- ii) Straight of grain
- iii) Fitting line or seam allowance
- iv) Darts
- v) Notches or balance marks.

10

c) Classify frills into four (4) groups, giving areas where each can be applied on garment 8

[30].

