

1st SEM. 2016/2017



PAGE 1 OF 4

UNIVERSITY OF SWAZILAND
SUPPLEMENTARY EXAMINATION PAPER

PROGRAMME : **BACHELOR OF SCIENCE IN
TEXTILE, APPAREL DESIGN AND
MANAGEMENT, CONSUMER SCIENCE
& CONSUMER SCIENCE EDUCATION
YEAR II**

COURSE CODE : **TAD203**

TITLE OF PAPER : **APPAREL PATTERN DESIGN**

TIME ALLOWED : **TWO (2) HOURS**

INSTRUCTION : **ANSWER QUESTIONS ONE (1) AND
ANY OTHER TWO (2) QUESTIONS**

**DO NOT OPEN THIS PAPER UNTIL PERMISSION HAS BEEN
GRANTED BY THE CHIEF INVIGILATOR**

QUESTION 1 (COMPULSORY)

- a) Give **three (3)** guidelines you followed in order to accurately measure the body.
(6 Marks)
- b) Mention any difficulty you encountered as a consequence of taking body measurements inaccurately.
(2 Marks)
- c) Briefly explain the importance of knowing your figure type.
(5 Marks)
- d) Darts are a designer's greatest asset. Mention **six (6)** ways in which darts can be used to create many designs.
(12 Marks)
- e) Pattern labels are a source of information when using patterns. List and illustrate **five (5)** pattern labels and fully explain when they can be used in a pattern.
(15 Marks)

[TOTAL MARKS = 40]

QUESTION 2

- a) Give the **two (2)** methods of dart manipulation and explain how they differ from each other.
(5 Marks)
- b) Define the following terms:
- i) Trueing
 - ii) Basic block/pattern
 - iii) Pattern grading
 - iv) Sloper
 - v) Pivot method

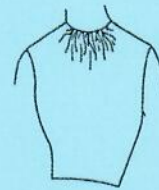
(15 Marks)

- c) Analyse the designs below and fully explain how they differ from each other.

i)



Design 1



Design 2

ii)



Design 1



Design 2

(10 Marks)

TOTAL MARKS = 30]

QUESTION 3

- a) With reference to the two (2) designs below, do the following:

i. Conduct a design analysis for the design.

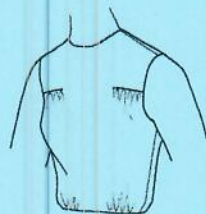
(2 X 2 = 4 Marks)

ii. Using the dart manipulation technique adapt the basic blocks to the final design patterns. Use the provided 1/4 scale blocks.

(8 X 2 = 16 Marks)

iii. Show all the final design pattern pieces with pattern markings.

(5 X 2 = 10 Marks)



Design 1

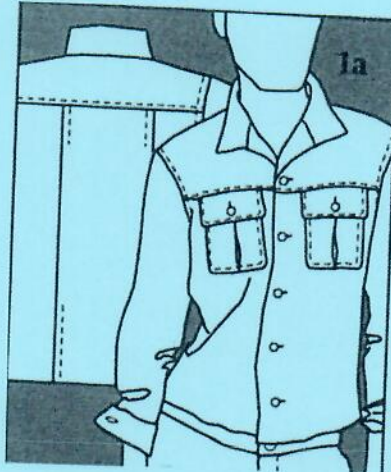


Design 2 (note that the yoke extends to the back bodice)

[TOTAL MARKS = 30]

QUESTION 4

- a) Convert the basic shirt blocks to the following design for the back and front patterns
i.e. excluding the collar and sleeves.



(14 Marks)

- b) Fully explain how the following differ from each other.
- i) Mandarin collar and the sailor's collar
 - ii) Puff sleeve and the bishop sleeve
 - iii) Skirt with godets and gored skirt
 - iv) Trumpet sleeve and leg of mutton sleeve

(16 Marks)

[TOTAL MARKS = 30]

