

1st SEM. 2016/2017



PAGE 1 OF 4

UNIVERSITY OF SWAZILAND
FINAL EXAMINATION PAPER

PROGRAMME : **BACHELOR OF SCIENCE IN
TEXTILE, APPAREL DESIGN AND
MANAGEMENT, CONSUMER SCIENCE
& CONSUMER SCIENCE EDUCATION
YEAR II**

COURSE CODE : **TAD203**

TITLE OF PAPER : **APPAREL PATTERN DESIGN**

TIME ALLOWED : **TWO (2) HOURS**

INSTRUCTION : **ANSWER QUESTION ONE (1) AND
ANY OTHER TWO (2) QUESTIONS**

**DO NOT OPEN THIS PAPER UNTIL PERMISSION HAS BEEN
GRANTED BY THE CHIEF INVIGILATOR**

QUESTION 1 (COMPULSORY)

- a) Using the following body measurements, draft a quarter scale bodice front for girls or a quarter scale shirt front for boys.

Girl's Measurements (in centimetres)			Boy's Measurements (in centimetres)	
1	Front total length	42	Chest	100
2	Bust	98	Scye depth	24
3	Waist	69	Back neck to waist	44
4	Chest	32	Neck size	40
5	Bust line to armpit (at side seam)	5	Half back	20
6	Shoulder to shoulder	40	Garment length	Use your discretion
7	Shoulder tip to centre front waist (past apex)	44	Note: Use standard measurements for all other measurements that have not been stipulated	
8	Shoulder seam centre to apex	25		
9	Shoulder length	13		
10	Dart intake	3		
11	Centre front length	37		

- b) Analyse the design below and using the slash method, adapt a basic front bodice to the following bodice design and label the pattern piece. Use the provided front bodice template. **(20 Marks)**

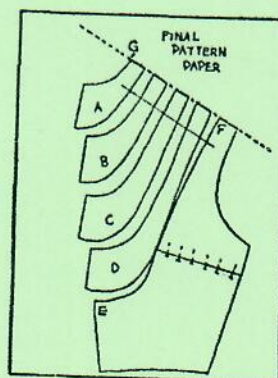


(5 +12 +3 = 20 Marks)

[TOTAL MARKS = 40]

QUESTION 2

- a) There are mainly five established female figure types that have distinct features that render them different from each other.
- i) Describe **three (3)** of these female figure types to demonstrate how they differ from each other. (6 Marks)
- ii) Suggest suitable clothing for any **two (2)** of the female figure types mentioned above. Justify your answer. (4 Marks)
- b) Describe the ideal male figure type by clearly highlighting its typical body features and explain why it is said to be ideal. (5 Marks)
- c) With reference to the provided working pattern below:
- i) By means of a diagram, show the design that will be made from the pattern below.



- ii) By means of well labelled diagrams explain how the pattern has been developed. (5 Marks)

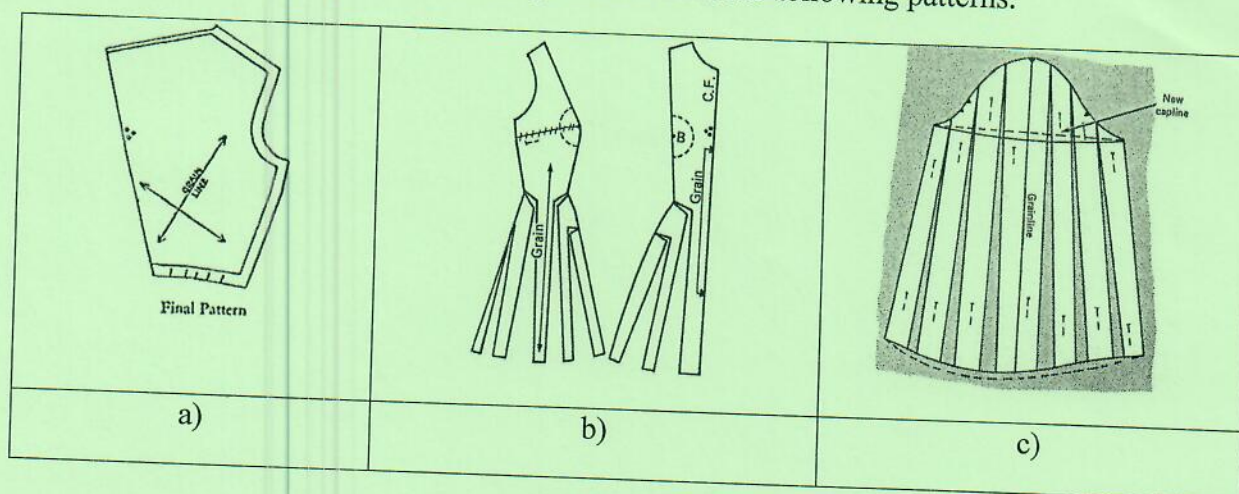
(10 Marks)

[TOTAL MARKS = 30]

QUESTION 3

- a) What is design analysis? (3 Marks)
- b) Using the $\frac{1}{4}$ scale front bodice block identify the bust point (B.P.), insert the bust circle and indicate **six (6)** possible dart positions (6 Marks)

c) Sketch the designs that will be produced from the following patterns.



(9 Marks)

d) Fully explain why it was important for you to sew a test garment.

(6 Marks)

e) During the first test garment fit, your classmates identified a number of faults which resulted in poor fit. Mention **two (2)** of these and fully explain how they were rectified.

(6 Marks)

[TOTAL MARKS = 30]

QUESTION 4

a) What is a dart? Support your answer by giving two examples of darts

(4 Marks)

b) Explain how to determine the following

- Dart size
- Dart length
- Dart shape

(6 Marks)

c) As a pattern designer one should have a thorough understanding of the function of darts and how darts are used to create designs. Demonstrate this knowledge by mentioning **five (5)** rules one should observe when using darts.

(10 Marks)

d) During the drafting of your basic blocks you used a number of tools. List and describe the function of **four (4)** of these pattern drafting tools

(10 Marks)

[TOTAL MARKS = 30]