

1st SEM. 2014/2015



PAGE 1 OF 5

UNIVERSITY OF SWAZILAND

FINAL EXAMINATION PAPER

**PROGRAMME : BACHELOR OF SCIENCE IN
TEXTILE APPAREL DESIGN &
MANAGEMENT
YEAR III**

COURSE CODE : TADM 302

TITLE OF PAPER : BASIC DRAPING

TIME ALLOWED : TWO (2) HOURS

**INSTRUCTIONS : ANSWER QUESTION ONE (1)
AND ANY OTHER (2) QUESTIONS**

TOTAL MARKS : 100

**DO NOT OPEN THIS PAPER UNTIL PERMISSION HAS BEEN
GRANTED BY THE CHIEF INVIGILATOR**

QUESTION 1 (COMPULSORY)

- a) Define croquis. Why is it crucial for a designer?
(5 Marks)
- b) Inspiration is the basis for design. Designers' creativity in designing results from various sources. Give **five (5)** such sources and explain how they can be used.
(15 Marks)
- c) Compare and contrast the draping procedure of a basic shift dress using *woven* and *knit* fabric(s). Which procedure would you recommend to a beginner and why?
(20 Marks)
- [TOTAL MARKS = 40]

QUESTION 2

- a) Compare and contrast the draping procedure of a knife-pleated skirt and a gathered skirt with a shaped yoke of your choice. Make use of diagrams to show pattern markings on the final patterns. Which procedure would you recommend to a beginner and why?
(20 Marks)
- b) Briefly outline **five (5)** advantages and disadvantages of working/draping with the actual fashion fabric on the dress form.
(10 Marks)
- [TOTAL MARKS = 30]

QUESTION 3

- a) The princess dress is fitted with seams rather than darts. Provide a princess dress design displaying creative use of princess lines. Describe how you would prepare the fabric for draping the princess dress design and the procedure you would follow in perfecting the pattern and checking its fit on the dress form.
(12 Marks)
- b) Explain the term 'dart-equivalent seam' and indicate where you would use it.
(4 Marks)

PAGE 3 OF 5
TADM 302 (M)

c) Describe the given list of equipment and indicate how you would use each of these in draping. Provide a sketch for each piece of equipment to show their differences.

- i) Hip curve
- ii) Flexible curve
- iii) French curve

(12 Marks)

d) Define the term *apex* as used in the draping method of patternmaking indicating its importance.

(2 Marks)

[TOTAL MARKS =30]

QUESTION 4

a) Style variations in bodices include *symmetric* and *asymmetric* design. Illustrate an asymmetric bodice for a waisted dress design to show the front and back of the design. You can use the **croquis** in **Appendix 1** for sketching the dress design. Use the provided dress form in **Appendix 2** to indicate the body form preparation you would do for draping the bodice design.

(10 Marks)

b) Describe the steps you will follow in fabric preparation and in the draping of the asymmetric bodice design of the illustrated outfit in (a), and the steps you would take in perfecting the pattern and checking its fit on the dress form.

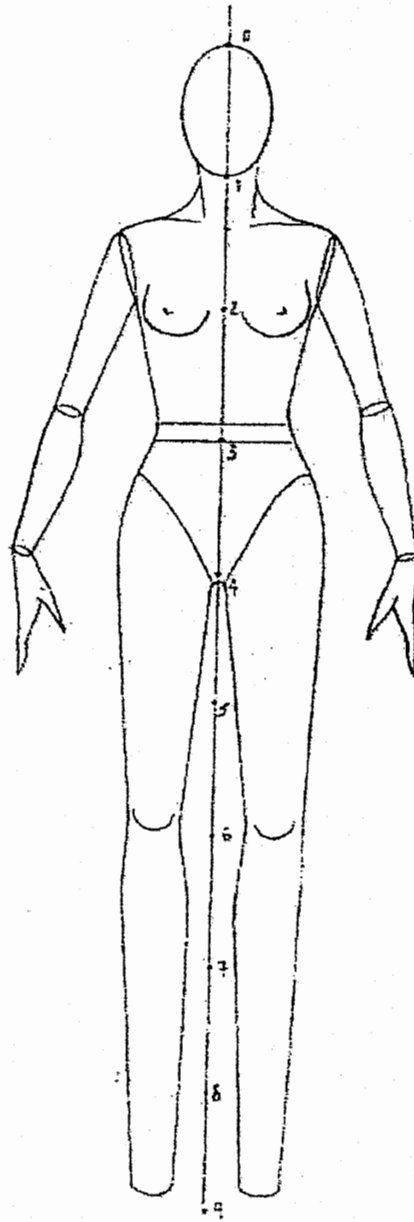
(14 Marks)

c) Illustrate the finished pattern pieces with pattern markings, for the bodice fronts of the outfit.

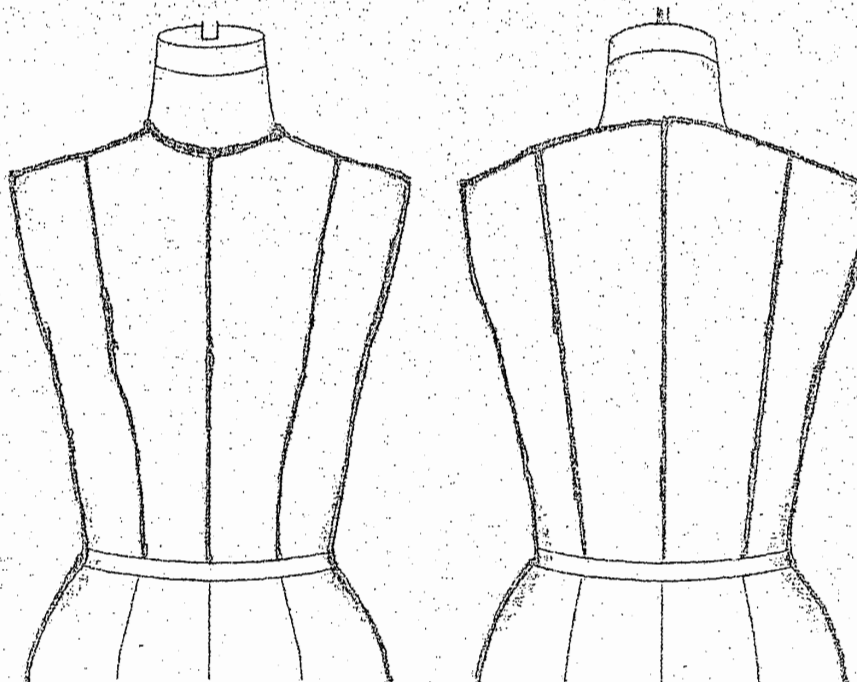
(6 Marks)

[TOTAL MARKS = 30]

APPENDIX 1



APPENDIX 2



Dress Form Front

Dress Form Back