



**1<sup>st</sup> SEM. 2013/14**

**PAGE 1 OF 7**

**UNIVERSITY OF SWAZILAND  
FINAL EXAMINATION PAPER**

**PROGRAMME : BACHELOR OF SCIENCE IN CONSUMER  
SCIENCE EDUCATION, CONSUMER SCIENCE  
AND TEXTILE APPAREL DESIGN  
MANAGEMENT YEAR IV**

**COURSE CODE : TADM 203**

**TITLE OF PAPER : PATTERN DRAFTING**

**TIME ALLOWED : TWO (2) HOURS**

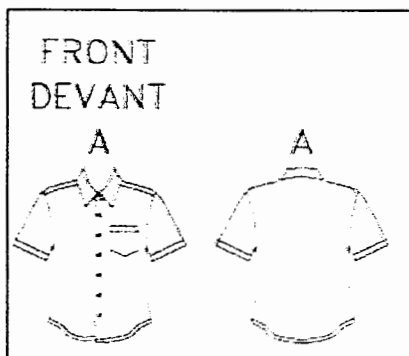
**INSTRUCTIONS : ANSWER QUESTION ONE (1)  
AND ANY OTHER TWO (2) QUESTIONS**

**DO NOT OPEN THIS PAPER UNTIL PERMISSION HAS BEEN GRANTED BY  
THE CHIEF INVIGILATOR**

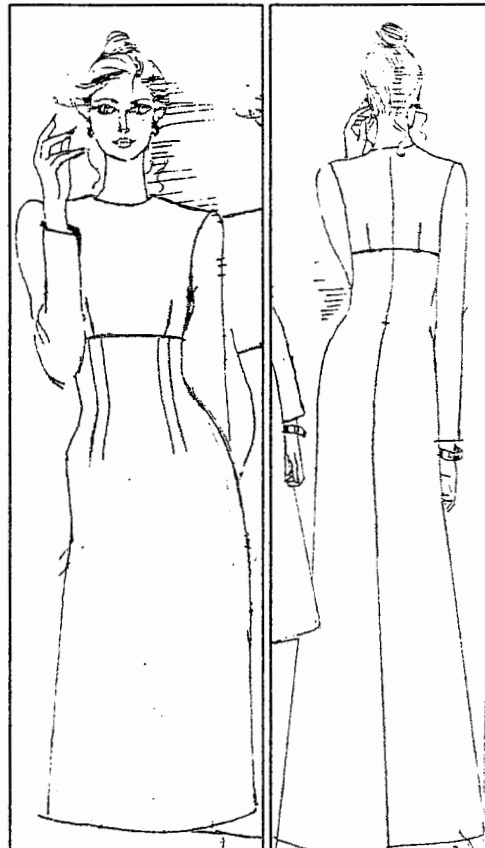
**QUESTION 1 (COMPULSORY)**

- a) Conduct a design analysis of the design below and use the attached ¼ scale blocks to show four stages of how patterns of this design were adapted from basic blocks.

**(10 + 20 Marks)**



**Design 1**



**Design 2**

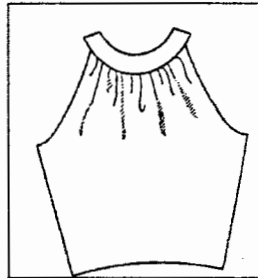
- b) Use illustrations to describe the dart manipulation theory.

**(10 Marks)**

**[TOTAL MARKS = 40]**

**QUESTION 2**

- a) Use a sketch to illustrate and label the **four (4)** basic skirt silhouettes. **(8 Marks)**
- b) Draw **one (1)** basic block and label at least **six (6)** pattern markings. **(6 Marks)**
- c) Sketch **four (4)** stages on how the bodice front below has been adapted from a basic block. **(12Marks)**



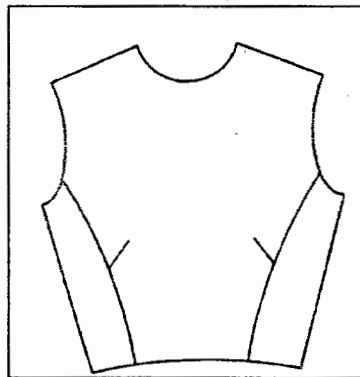
- d) State **two (2)** guidelines to follow in order to accurately measure the body.

**(4 Marks)**

**[TOTAL MARKS = 30]**

**QUESTION 3**

- a) Discuss the first fitting of the test garment (dress or trouser). **(15 Marks)**
- b) Sketch and label pattern pieces for the design below. **(8 marks)**



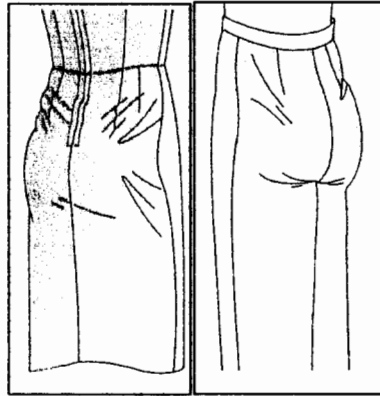
- c) With the aid of a diagram, illustrate how to make a shirt collar with a band/ stand.

**(7 Marks)**

**[TOTAL MARKS = 30]**

**QUESTION 4**

- a) Discuss **two (2)** similarities **and two (2)** differences between a bell and bishop sleeve. Illustrate your answer. **(10 Marks)**
- b) Use illustrations **only** to show your understanding of how each of the following is adapted.
- i) Lowered necklines
  - ii) Raised necklines
  - iii) Widened necklines
  - iv) Cowl necklines
- (4 X 3 = 12 Marks)**
- c) Sketch patterns showing how to correct one of the fit problems below. **(8 Marks)**



**Skirt**

**Trousers**

**[TOTAL MARKS = 30]**

