



1st SEM. 2012/13

PAGE 1 OF 6

UNIVERSITY OF SWAZILAND

SUPPLEMENTARY EXAMINATION PAPER

PROGRAMME: **BARCHELOR OF SCIENCE IN TEXTILE APPAREL
DESIGN and MANAGEMENT; CONSUMER SCIENCES
AND CONSUMER SCIENCES EDUCATION YEAR 11**

COURSE CODE: **TADM 203**

TITLE OF PAPER: **PATTERN DRAFTING**

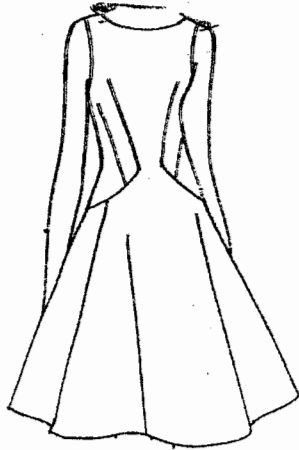
TIME ALLOWED: **TWO (2) HOURS**

INSTRUCTIONS: **ANSWER QUESTION ONE (1)
AND ANY OTHER TWO (2) QUESTIONS**

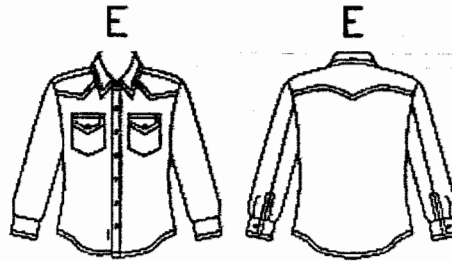
**DO NOT OPEN THIS PAPER UNTIL PERMISSION HAS BEEN GRANTED BY
THE CHIEF INVIGILATOR**

QUESTION 1 (COMPULSORY)

a) Conduct a design analysis for the design 1 for girls and design 2 for boys. Make patterns for each using the attached $\frac{1}{4}$ scale blocks and show all pattern markings. (10+20=30 Marks)

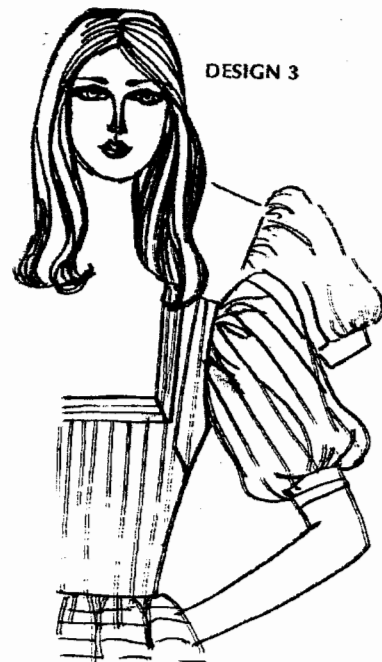


Design 1



Design 2

b) Name the type of sleeves below. Using illustrations, conduct a design analysis to show how each sleeve was adapted. (10 marks)



[TOTAL MARKS 40]

QUESTION 2

- a) Name and describe any **five (5)** pattern marking tools you used during pattern drafting.
State how and why each tool was used. (10 Marks)
- b) Discuss the use of **five (5)** elements and five (5) principles of design in pattern drafting. (20 Marks)

[TOTAL MARKS = 30]

QUESTION 3

- a) Describe **five (5)** points on how you ensured accurate measurements of the body and why. (10 Marks)
- b) Differentiate between the following terms:
- i) Basic ease and design ease
 - ii) Warp and weft threads
 - iii) Selvedge and raw edges
 - iv) Symmetric and asymmetric designs
 - v) Basic blocks and patterns (10 Marks)
- c) Using a diagram(s), explain and label the following style features: (10 Marks)
- i) Lapel
 - ii) Roll-line
 - iii) Collar stand
 - iv) Fall
 - v) Break point

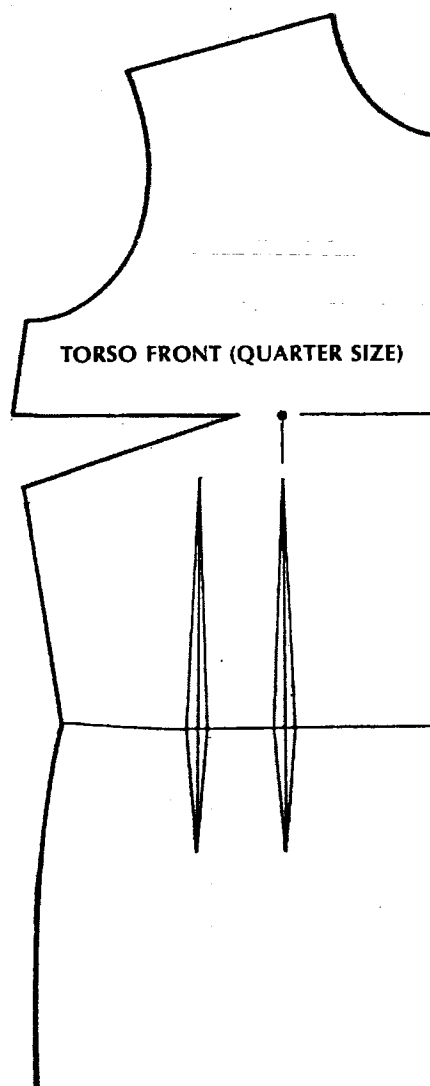
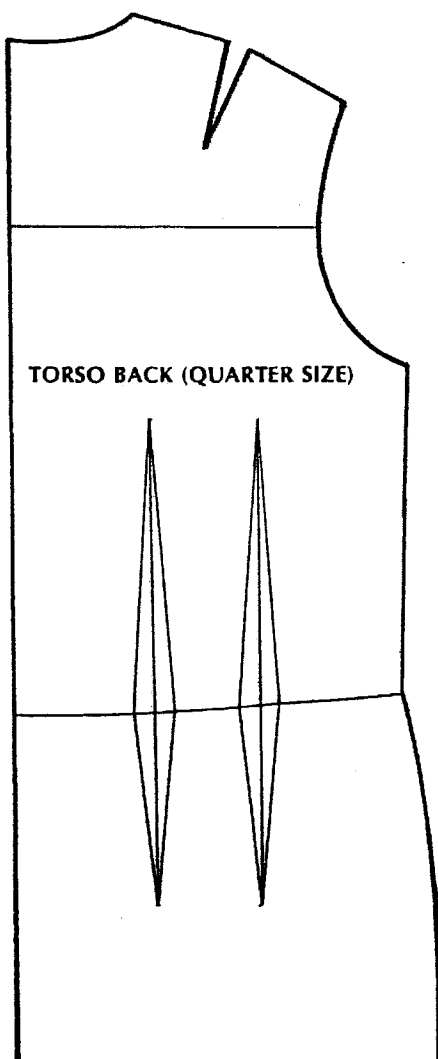
[TOTAL MARKS = 30]

QUESTION 4

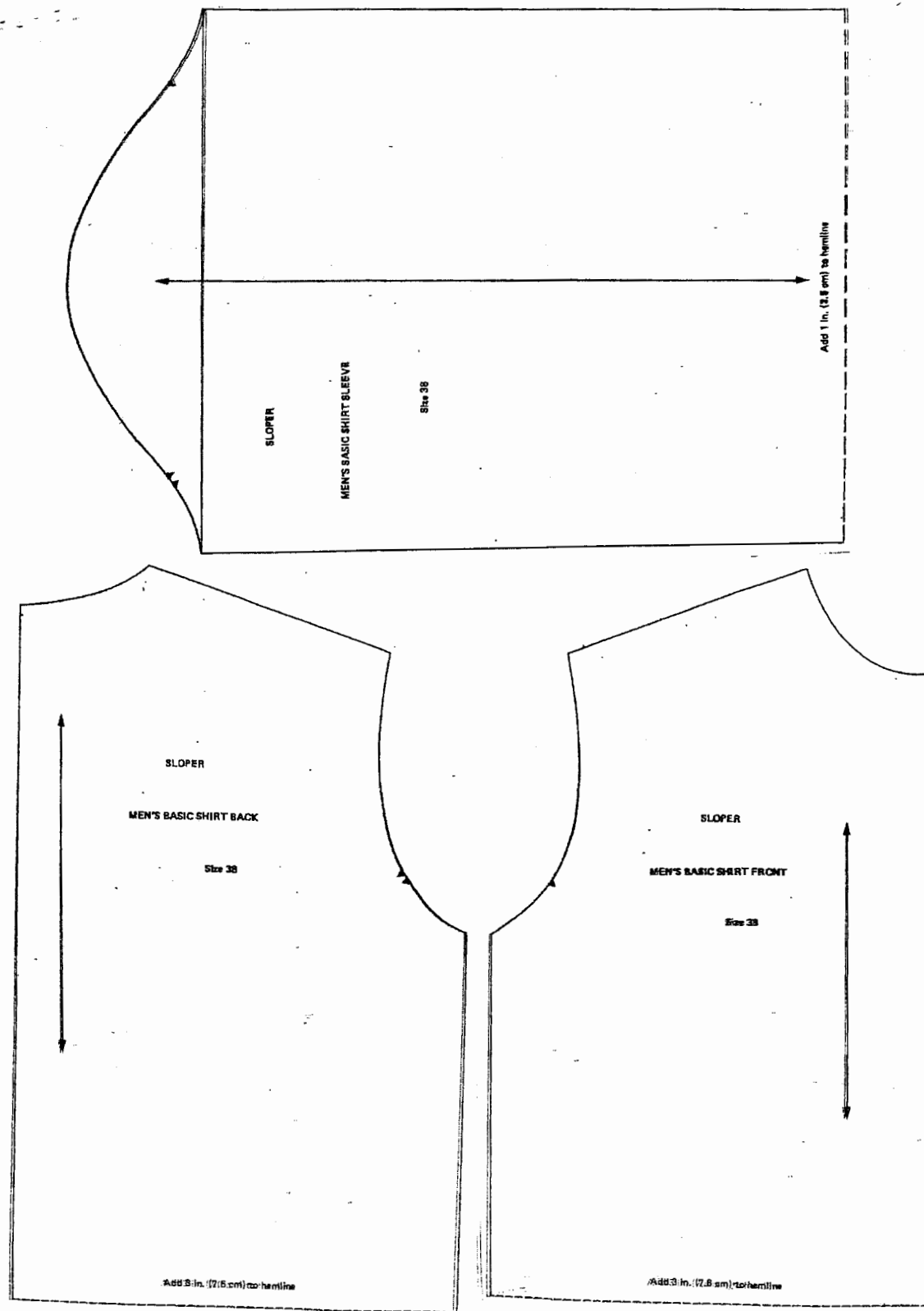
- a) Discuss **five (5)** ways to use darts and dart equivalent to come up with new designs. (10 Marks)
- b) Explain where and how **five (5)** body measurements used to draft bodices for girls and jacket blocks for boys were taken (**Choose what is applicable to you**). (10 Marks)
- c) Using illustrations describe and show how you laid out test garment pattern pieces on the unbleached calico; label all parts of the fabric and the pattern pieces. (10 Marks)

[TOTAL MARKS = 30]

PAGE 4 OF 6
TADM 203 (S)



PAGE 5 OF 6
TADM 203 (S)



149

PAGE 6 OF 6
TADM 203 (S)

