

1ST SEM. 2012/2013



PAGE 1 OF 5

UNIVERSITY OF SWAZILAND

FINAL EXAMINATION PAPER

**PROGRAMME : BACHELOR OF SCIENCE IN
TEXTILE, APPAREL DESIGN AND
MANAGEMENT YEAR II**

COURSE CODE : TADM 201

TITLE OF PAPER : ART AND DESIGN

TIME ALLOWED : TWO (2) HOURS

**INSTRUCTION : ANSWER QUESTION ONE (1) AND
ANY OTHER TWO (2) QUESTIONS**

**DO NOT OPEN THIS PAPER UNTIL PERMISSION HAS BEEN
GRANTED BY THE CHIEF INVIGILATOR**

QUESTION 1 (COMPULSORY)

- a) Explain how you can create an illusion of an ideal figure for a very short woman with a heavy bust, short neck and emphasize her beautiful face using the following elements of art/design.

- i) Colour
- ii) Line
- iii) Texture

(9 Marks)

- b) Draw an illustration that is out of proportion and explain why it is out of proportion.

(6 + 3 = 9 Marks)

- c) Describe the following art movements and explain how they differ from each other.

- i) Pointillism
- ii) Opt art
- iii) Cubism
- iv) Arts and crafts

(16 Marks)

- d) The post- impressionism art movement was influenced by the impressionism art movement. Explain how it differed from the impressionism style.

(3 Marks)

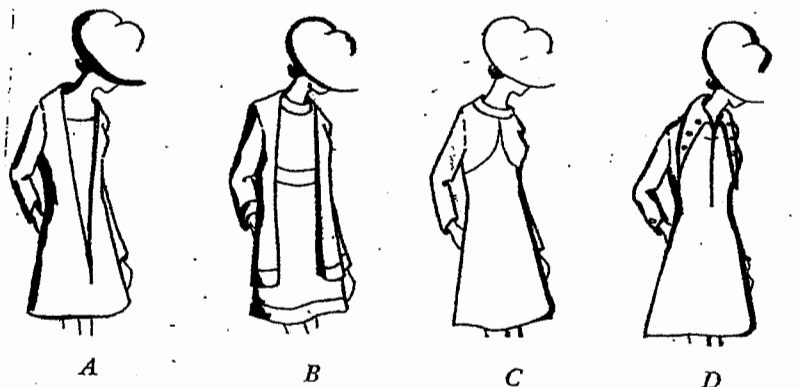
- e) Explain why brides wear white wedding gowns on their first wedding.

(3 Marks)

[TOTAL MARK = 40]

QUESTION 2

- a) Refer to the illustrations below when answering the following questions, and justify your answer.



- i) Curved shapes conform to the human body and flatter the figure. In which outfit are curved shapes used and what is their effect on the figure?
- ii) Which design would be the least appropriate to accent the bust line?
- iii) Which outfit would be the most appropriate for a tall and slender girl to appear shorter? Justify your answer.
- iv) Which outfit would be the most appropriate choice for emphasizing a square facial shape? Justify your answer.

(8 Marks)

- b) Explain how the texture of a fabric can have an effect on the size and type of figure.

(2 x 3 = 6 Marks)

- c) Explain what is meant by the hand of a fabric and why it is especially an important consideration in choosing fabric for a specific design or figure type.

(2 + 4 = 6 Marks)

- d) State which areas of the human figure do the following emphasize and explain how they can be used to accentuate these areas of the human figure.

- i) Hemline of a dress up to the knees
- ii) Shoes
- iii) Cuffs
- iv) Collar
- v) Waist belt

(10)

[TOTAL MARKS = 30]

QUESTION 3

a) Explain the importance and effect of the following in art:

- i) Light and shadow technique
- ii) Rule of thirds
- iii) Masking fluid

(9 Marks)

b) List and explain **three (3)** ways in which art can be evaluated.

(9 Marks)

c) As an artist, explain how the following fabric textures will behave on the human figure and how you would cleverly use them in garment design.

- i) Crisp textures
- ii) Heavy texture
- iii) Loosely woven fabrics
- iv) Clinging fabrics

(12 Marks)

[TOTAL MARK = 30]

QUESTION 4

a) Define the following terms:

- i) Marbling
- ii) Stenciling
- iii) Proportion
- iv) Croquis
- v) Primary colours

(15 Marks)

b) There are many innovative techniques and media fine artists have explored to develop their artworks. Fully explain:

- i) How you made the marbling medium you used for the marbling project.
- ii) How you made the water colour artwork.

(10 Marks)

c) Explain how the following colours are made:

- i) Purple/violet
- ii) Orange
- iii) Green
- iv) Navy blue
- v) Pink

(5 Marks)

[TOTAL MARK = 30]