



2ND SEM, 2010/2011

PAGE 1 OF 5

UNIVERSITY OF SWAZILAND

FINAL EXAMINATION PAPER

**PROGRAMME : BACHELOR OF SCIENCE IN
TEXTILE AND APPAREL DESIGN
AND MANAGEMENT, CONSUMER
SCIENCE EDUCATION AND
CONSUMER SCIENCE YEAR III**

COURSE CODE : TADM 204

TITLE OF PAPER : APPAREL DESIGN: CONSTRUCTION

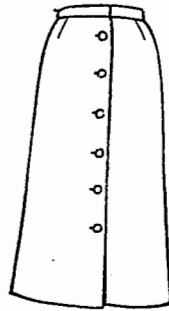
TIME ALLOWED : TWO (2) HOURS

**INSTRUCTION : ANSWER QUESTION ONE (1) AND
ANY OTHER TWO (2) QUESTIONS**

**DO NOT OPEN THIS PAPER UNTIL PERMISSION HAS BEEN
GRANTED BY THE CHIEF INVIGILATOR**

QUESTION 1 COMPULSORY

- a i) For girls: Using quarter scale blocks provided, adapt the front skirt block to the illustration below and its waist band. The back has an A-line silhouette.



- ii) Using the patterns drafted in a i) above, show the layout plan for the skirt. [15]
[10]
iii) Develop the construction sequence for the skirt in a i) above. [15]

OR

- a i) For boys: Using quarter scale blocks provided, adapt the shirt block to a man's sport front and its back which has a box pleat at the centre.



- ii) Using patterns drafted in a i) above, show the layout plan for the shirt. [15]
[10]
iii) Develop the construction sequence for the shirt in a i) above. [15]

[TOTAL MARKS 40]

QUESTION 2

- a) Name three cool colours (3) and three (3) warm colours and explain why they are either called cool or warm hues. Also explain the effects of cool and warm hues on the figure. $4 \times 2 = 8$
- b) From the computer figure analysis, what is your figure type? Name four (4) garment features you were discouraged to use or avoid and why? $4 \times 2 = 8$
- c) Using coloured pencils/ crayons and circles, illustrate the following colour schemes and their effects on the figure:
- i) Analogous colour schemes
 - ii) Accentuated neutral colour schemes
 - iii) Split complementary colour schemes $3 \times 4 = 12$
- d) Which line direction would be best the choice for an outfit to be worn by a short girl, who would like to appear tall and slim? Justify your answer. 2

[TOTAL MARKS 30]

QUESTION 3

- a) Name and explain five (5) pleat terminology you would use when teaching drafting of pleated garments. $5 \times 2 = 10$
- b) Discuss how your fabric choice for the garment to fit emphasized or accentuated good body features; cite examples. $5 \times 2 = 10$
- c) List and explain five (5) pattern lay-out rules you observed when laying-out the test garment. $5 \times 2 = 10$

[TOTAL MARKS 30]

QUESTION 4

- a) As a Junior Certificate external examiner for fashion and fabrics, list and discuss five (5) standards of good fit you would use to grade their garments. $5 \times 3 = 15$
- b) In this era of unemployment, discuss in detail how the principles and skills learnt in TADM 203 and TADM204 can be used to earn a living. 15

[TOTAL MARKS 30]

