



UNIVERSITY OF ESWATINI

2nd SEM. 2018/2019

RESIT EXAMINATION PAPER

PROGRAMME: All B.Sc. YEAR I

COURSE CODE: ASC104

TITLE OF PAPER: ZOOLOGY

TIME ALLOWED: TWO (2) HOURS

INSTRUCTIONS: ANSWER ANY FOUR (4) QUESTIONS

**DO NOT OPEN THIS PAPER UNTIL PERMISSION HAS BEEN GRANTED
BY THE CHIEF INVIGILATOR**

QUESTION 1

- List the structures associated with the cell membrane. (10.0 Marks)
- List and describe briefly all the cell membrane processes. (15.0 Marks)

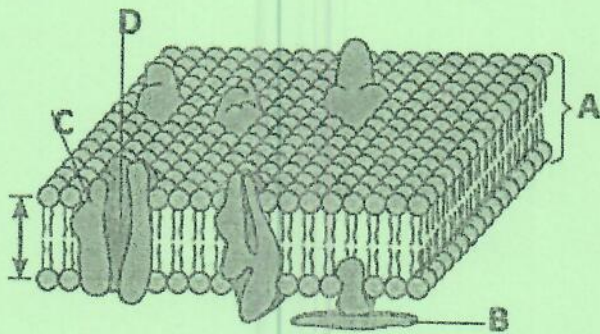
QUESTION 2

- Explain three (3) differences between compact and tubular glands. (9 Marks)
- List the common characteristics of the following phyla: Platy helminthes, Nematelminthes, Arthropoda and Chordata. (16 Marks)

QUESTION 3

- Identify the organ shown in figure 2 below and label the components A to D. (12 Marks)

Figure 2



- Which organelle is the control center of the cell? (3 Marks)
- Which organelle holds the cell together? (3 Marks)
- Which organelles are not found in animal cells? (3 Marks)
- List the functions of the two types of endoplasmic reticulum found in a cell. (4 Marks)

QUESTION 4

a. Write True or False on the answer script.

(2.0 Marks Each)

- 1) Fish, amphibians, are warm blooded, breathe with lungs or gills.
- 2) Reptiles have a type of body covering, warm blooded, live birth.
- 3) Birds breathe with gills, give birth to live ones, covered with scales.
- 4) Elephants breathe with lungs, air sacs, gills, do not have a spinal cord.
- 5) All living things have these characteristics: responsiveness, reproduction, feeding, movement, growth, energy release, nucleic acids, adaptation, excretion.
- 6) The Boundary of the animal cell is made of a phospholipid bilayer membrane.
- 7) The cell nucleus contains the nucleolus, chromosomes, surrounded by a double membrane and not the easiest organelle to see under a microscope.
- 8) The cytoskeleton provides shape and structure, helps move organelles around the cell.
- 9) The Rough endoplasmic reticulum is connected to the nuclear membrane, studded with ribosomes, it makes proteins and lipids.
- 10) Lysosomes work with plasma membranes, golgi apparatus, rough endoplasmic reticulum and mitochondria.
- 11) Lysosomes contain digestive enzymes that break down wastes by phagocytosis and digestion.

b. Write short notes on ribosomes.

(3.0 Marks)

QUESTION 5

Copy this table onto your answer book and complete it by filling your answers in the empty boxes (each box carries 1.0 marks).

(25.0 Marks)

Animal	Cattle	Brown Ear Tick	Ostrich	Crocodile	Roundworm
Phylum					
Class					
Order					
Family					
Genus					

END OF QUESTION PAPER.